

# TRAVEL SKETCHING 2025



# Overview

- Day 1 Materials / Perspective
- Day 2 Warm Up / Scale and Proportion
- Day 3 Warm Up / Composition
- Day 4 Warm Up / Focal Point
- Day 5 Warm Up / Details and Observation
- Day 6 Warm Up / Practice

# WHAT IS URBAN SKETCHING?

- Nonprofit Organization formed in 2007:  
<http://www.urbansketchers.org/>
- A Global Community of Artists Who Practice and Share On-Location Drawing
- Victoria Local Chapter on Facebook

# WHAT IS URBAN SKETCHING?

## Victoria Urban Sketchers

Public group · 433 members



+ Invite

Share

Discussion

Featured

People

Events

Media

Files

### Upcoming events

Find events

Create event



THIS SATURDAY AT 9:30 AM

**Sketch Finnerty Gardens**

Created by Cheryl Hebb

☆ Interested

🕒 Going

✉ Invite



### Past events



SAT, MAY 11

**Running of the Goats!**

Created by Cheryl Hebb



# WHAT IS URBAN SKETCHING?



Kiah Kiean



João Paulo  
Albergaria

# WHAT IS URBAN SKETCHING?



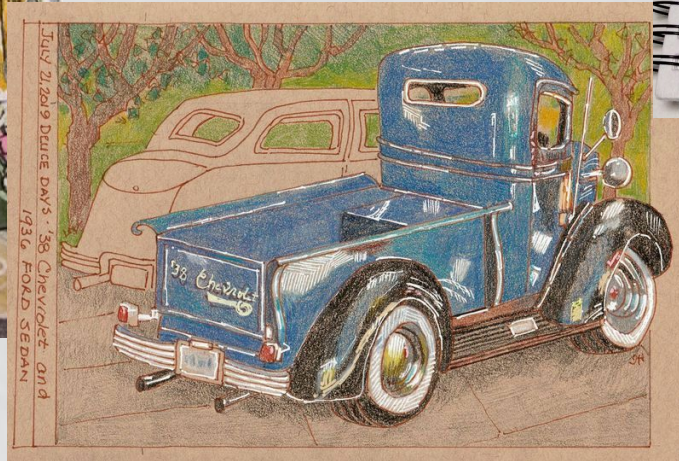
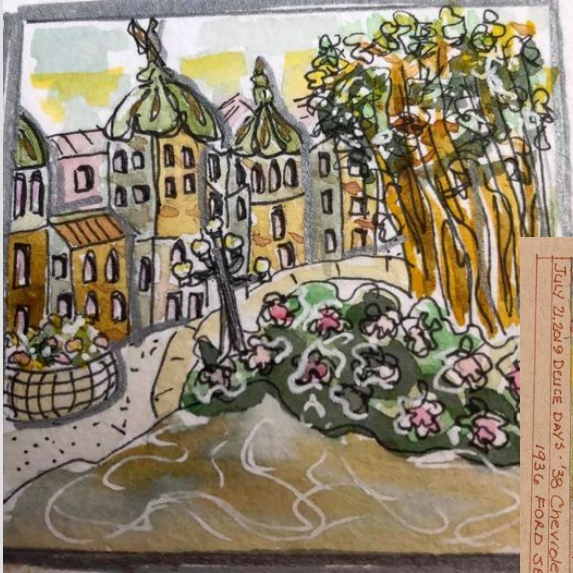
Marc Taro Holmes



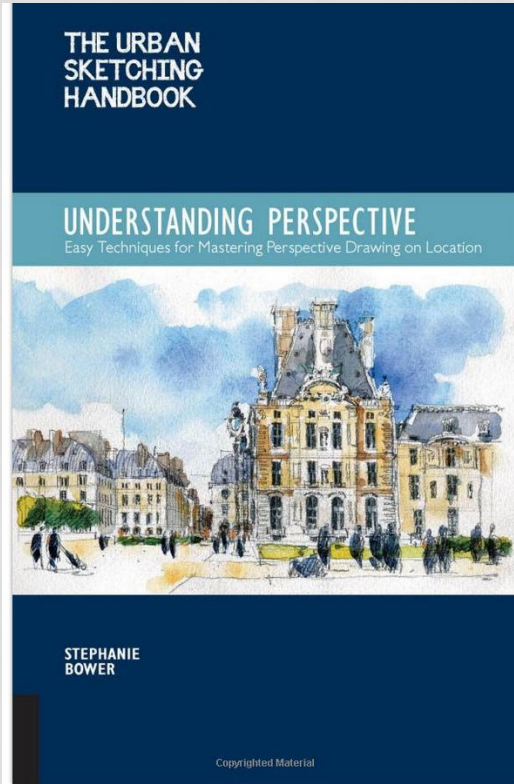
Simone Ridyard

# WHAT IS URBAN SKETCHING?

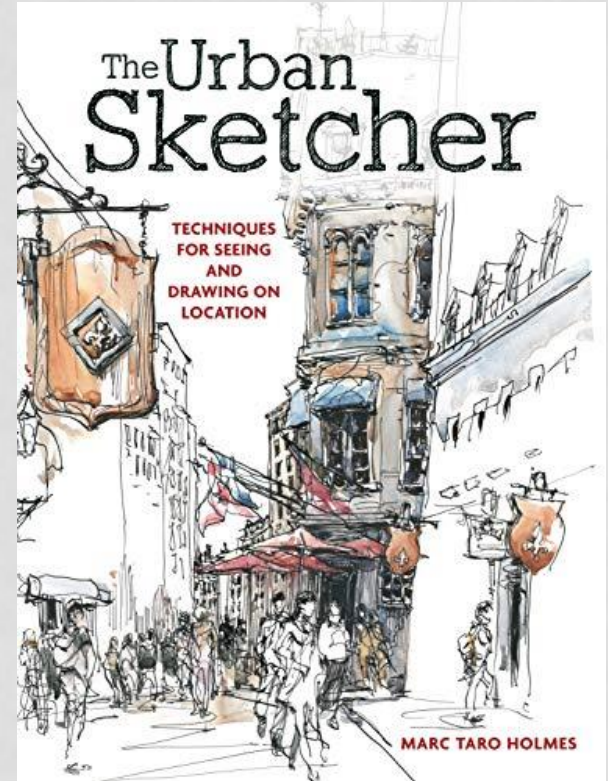
Victoria Urban Sketchers  
Works by: Cheryl, Inge,  
Lindsay



# REFERENCES



Books by:  
Marc Taro Holmes (right)  
Stephanie Bower (left)



# MY URBAN SKETCHING

Pencil:

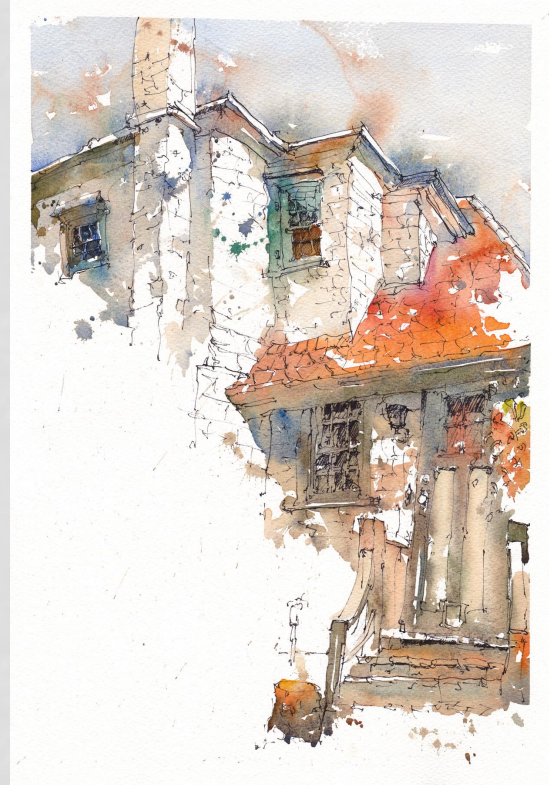
As little as possible

Ink:

As much as needed

Watercolour:

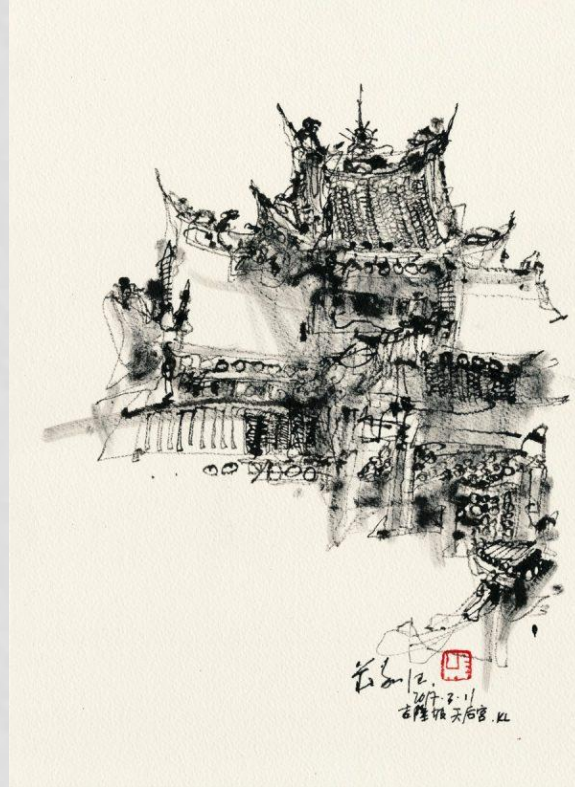
As much as necessary



# WHY INK ?

- Permanence
- Easy to transport
- Value range

Kiah Kiean



# MATERIALS

- Go light, less is more
  - All equipment can fit in a mid-sized backpack
- Be comfortable, be flexible
  - Chair, small umbrella (silver!), sun hat
- Plan ahead
  - Local art supply (paper)
  - Water supply etc.



# MATERIALS

- Comfort



# MATERIALS

- Sketching Tools 1

- HB Pencil
- Uni-Ball Fine
  - Waterproof (pigment)
- (Brush Pen)
  - Kuretake
  - Pentel Art Brush
  - Molotow Blackliner S
- Eraser



# MATERIALS

- Sketching Tools 2
  - Pen and nib
  - Use waterproof ink!



# MATERIALS

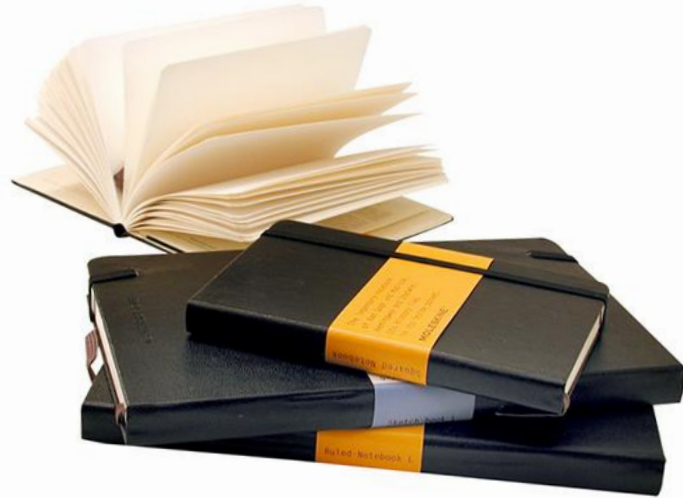
- Sketching Tools 3

- Fountain pen
- Problem: Most waterproof inks will clog your fountain pen, so use:
  - Noodler's Bulletproof
  - **Platinum Carbon Ink**
  - De Atramentis Ink



# Sketchbooks

- Watercolour Books and Pads
  - Moleskine
  - Hahnemuehle
  - Make your own book



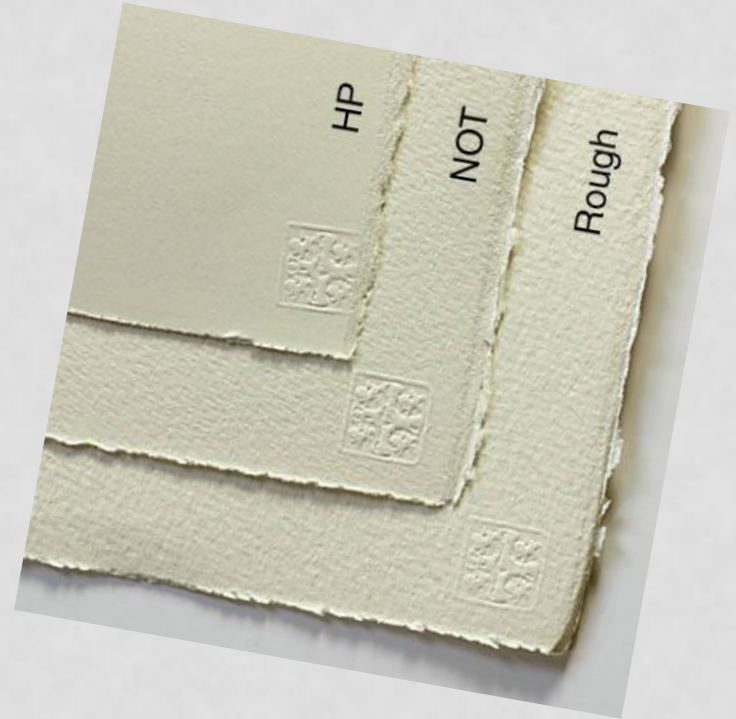
# PAPER

- Cheap sketchbook for layout and doodles:
  - Opus
  - Strathmore etc.



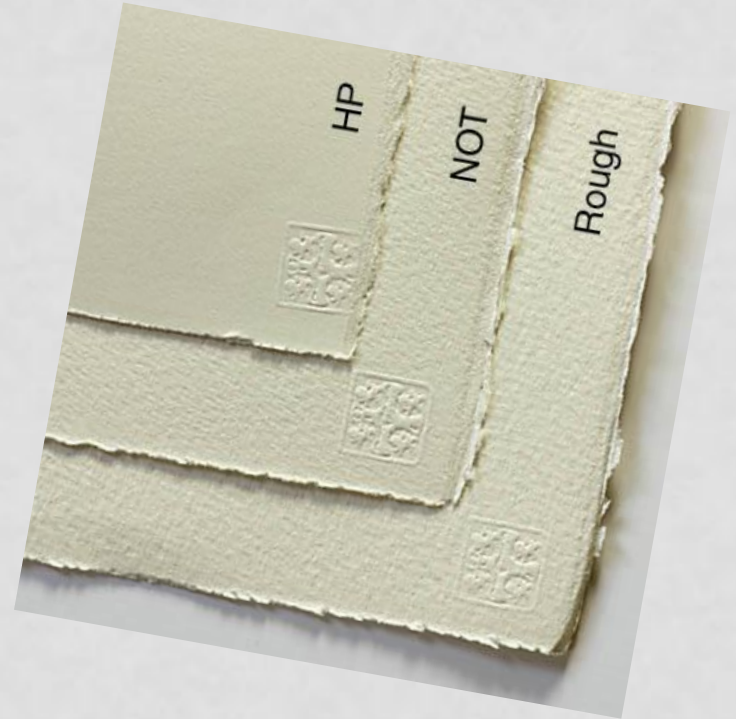
# PAPER 1

- Sheets 100% Cotton
- Hot Pressed, Cold Pressed (NOT),  
Rough
  - Arches, Waterford Sanders,  
Fabriano Artistico, Opus Finest
- Full sheet (30 x 22 in)
- Half sheet (22 x 15 in) or (30 x 11)
- Quarter sheet (11 x 15 in)
- Exotic formats



# PAPER 1

- Weight
  - 90 lb (200g)
  - 140 lb (300g)
  - 300 lb (600g)



# PAPER 2

- Blocks
  - Glued on outside
  - Buy 100% Cotton!



# Warm Up

- Warm up on cheap paper 2 x 5 minutes

# PERSPECTIVE

Representation of Depth:

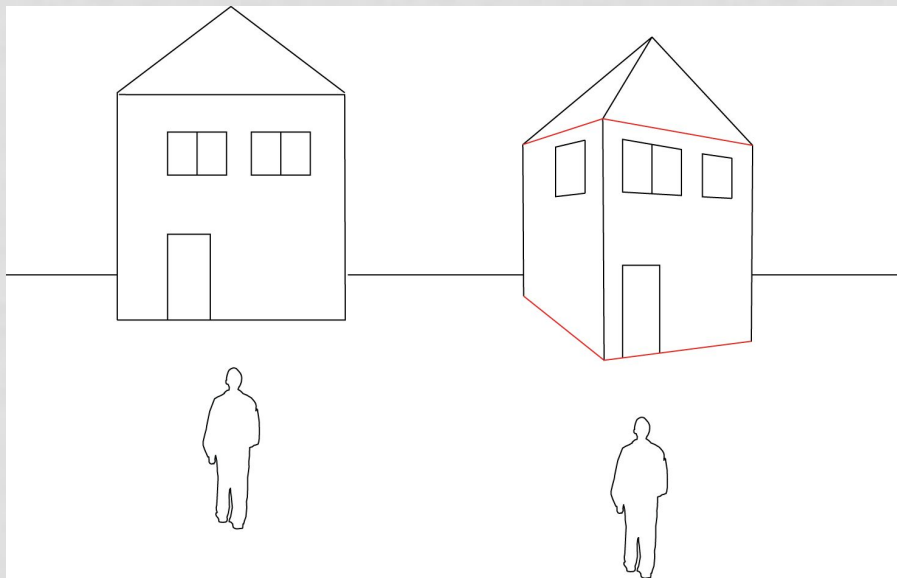
- Contrast (Less contrast in the background)
- Color (cooler in the background at daytime)
- Linear Perspective



# LINEAR PERSPECTIVE

Straight on view  
“Elevation”

Horizontal lines  
remain horizontal  
in drawing



Angled View  
“Perspective”

Horizontal lines  
appear tilted

# LINEAR PERSPECTIVE

Straight on View  
“Elevation”

Lines parallel to the ground  
remain horizontal on paper



# PERSPECTIVE

“Tracing”

- Real World
- Photo



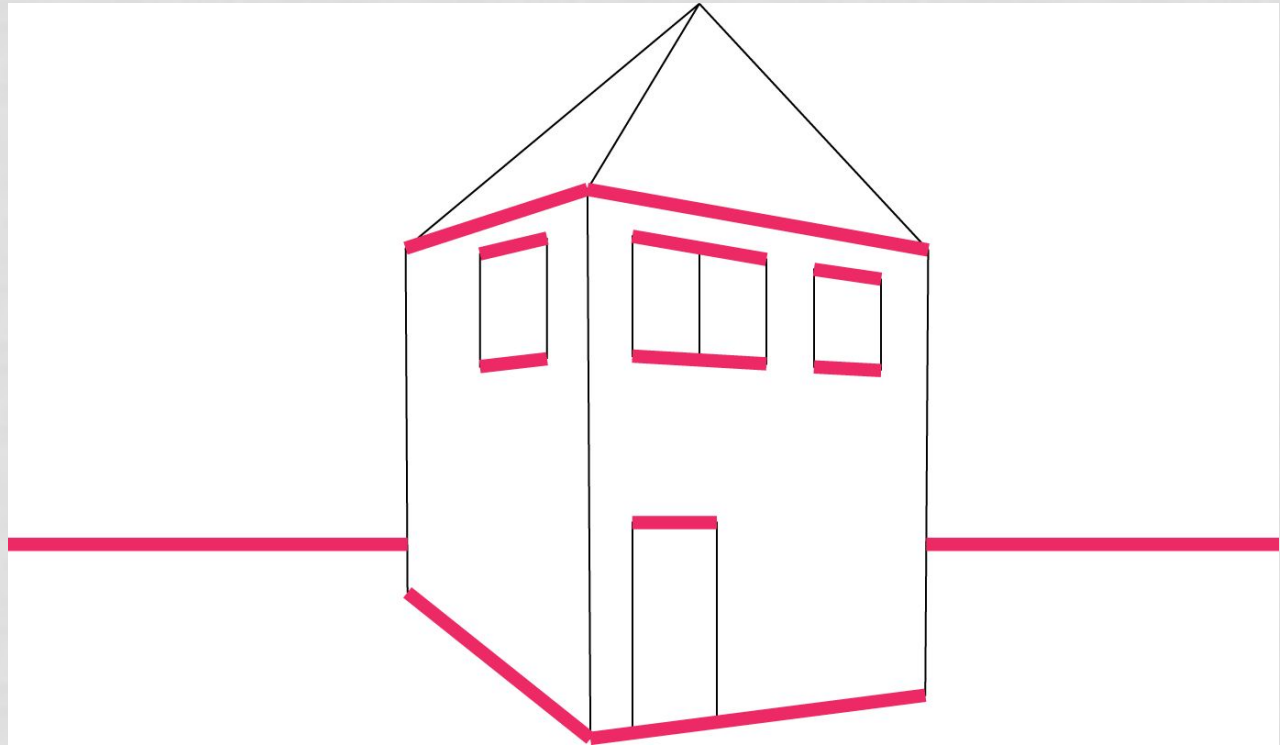
# PERSPECTIVE

Practice



# LINEAR PERSPECTIVE

Only use lines  
that are parallel  
to the ground!!!  
“True horizontal”



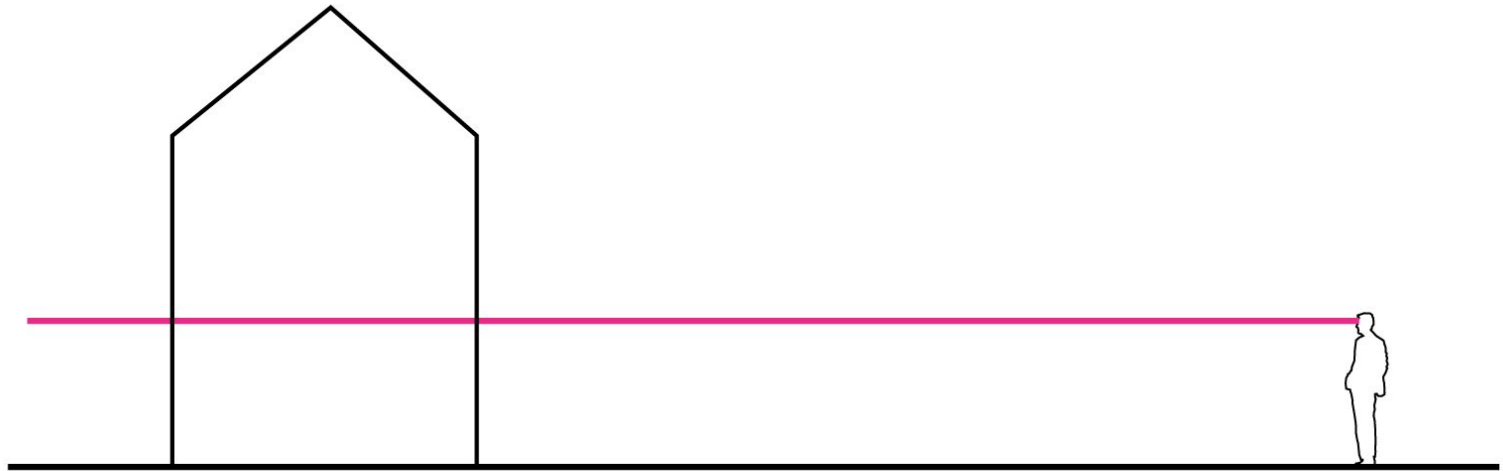
# LINEAR PERSPECTIVE



Angled View  
“Perspective”

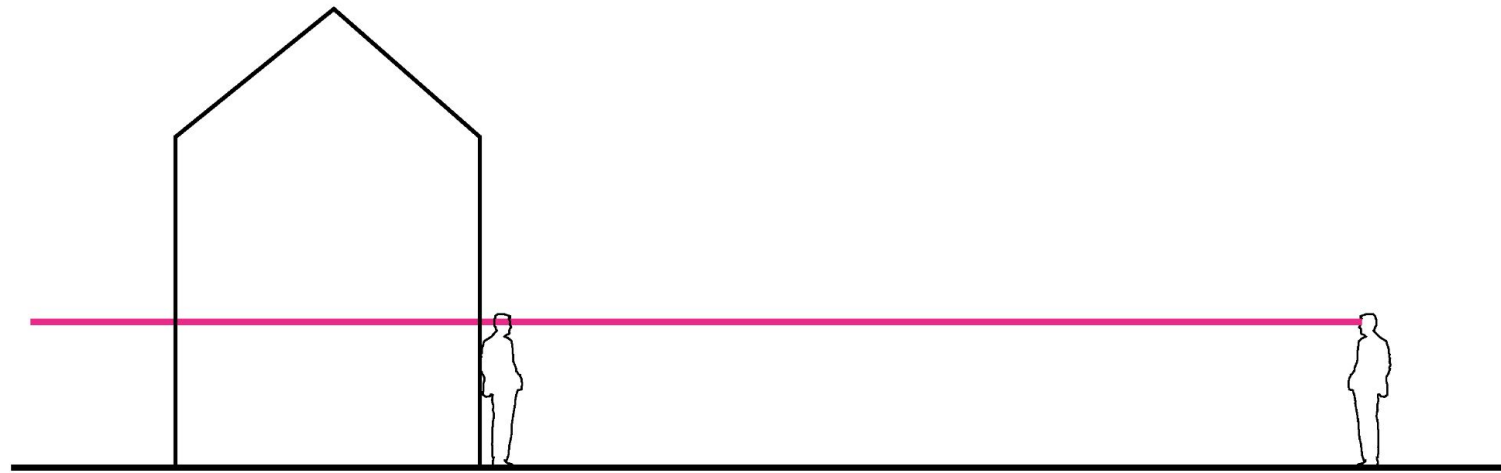
Lines parallel to the  
ground (true  
horizontal) appear  
tilted on photo and  
paper

# PERSPECTIVE



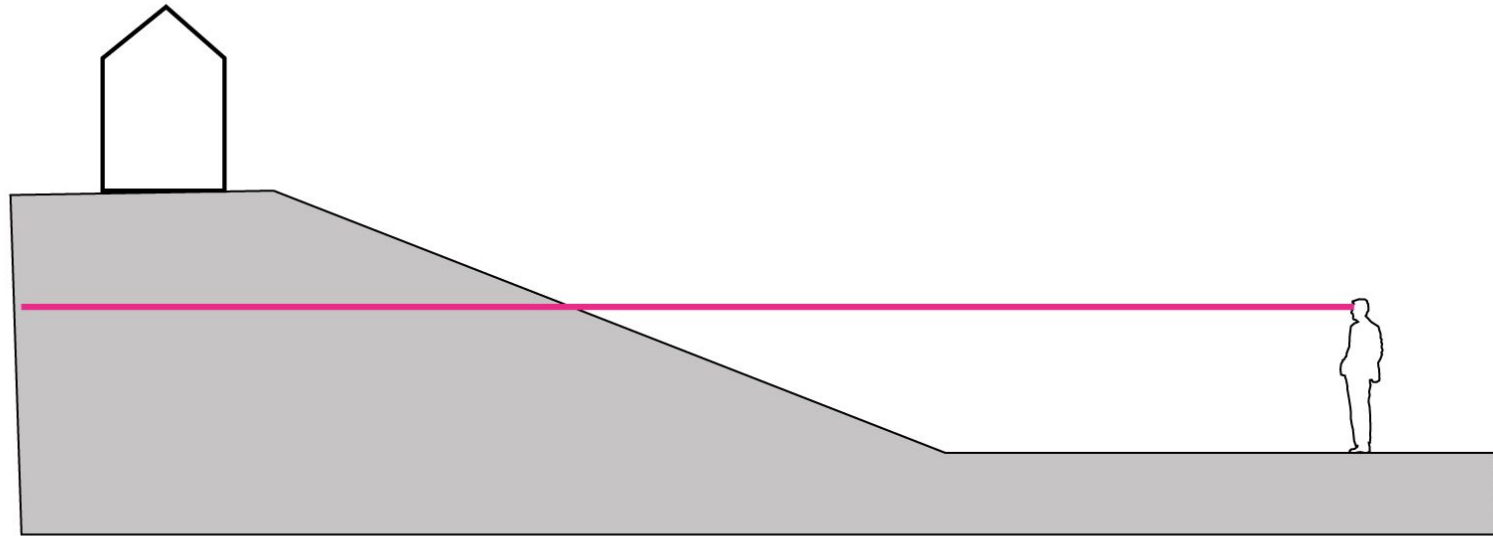
Eye Level=Horizon Line

# PERSPECTIVE



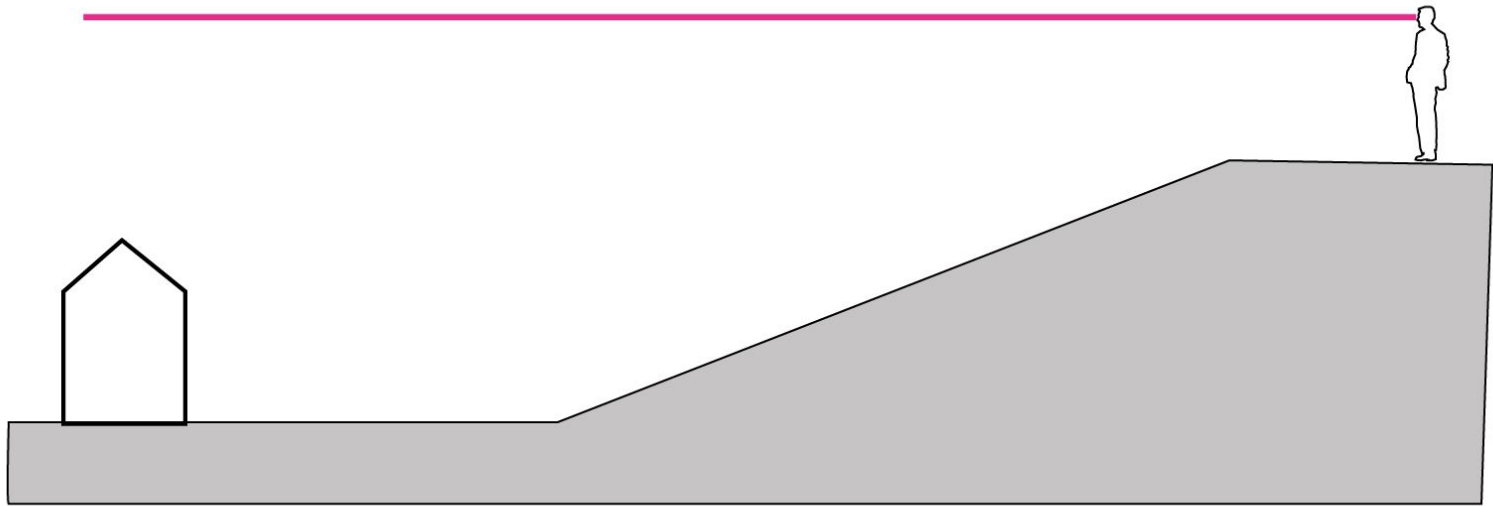
Eye Level=Horizon Line

# PERSPECTIVE



Eye Level=Horizon Line

# PERSPECTIVE



Eye Level=Horizon Line

# PERSPECTIVE



# PERSPECTIVE



# PERSPECTIVE



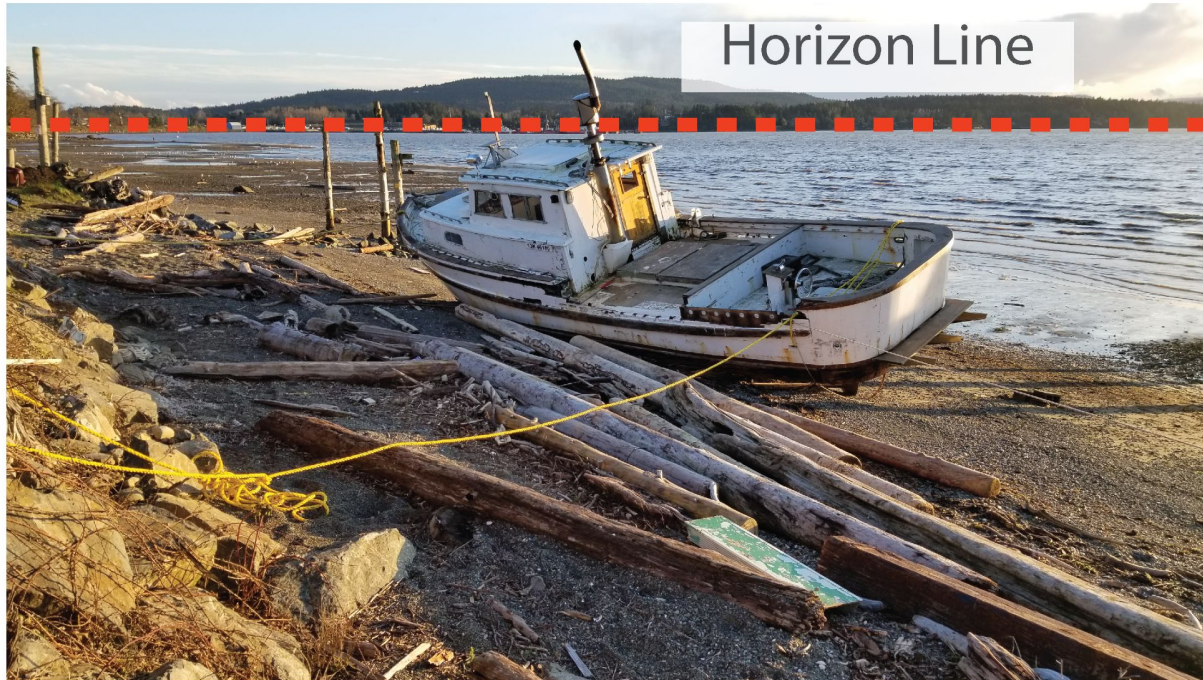
# PERSPECTIVE



# PERSPECTIVE



# PERSPECTIVE

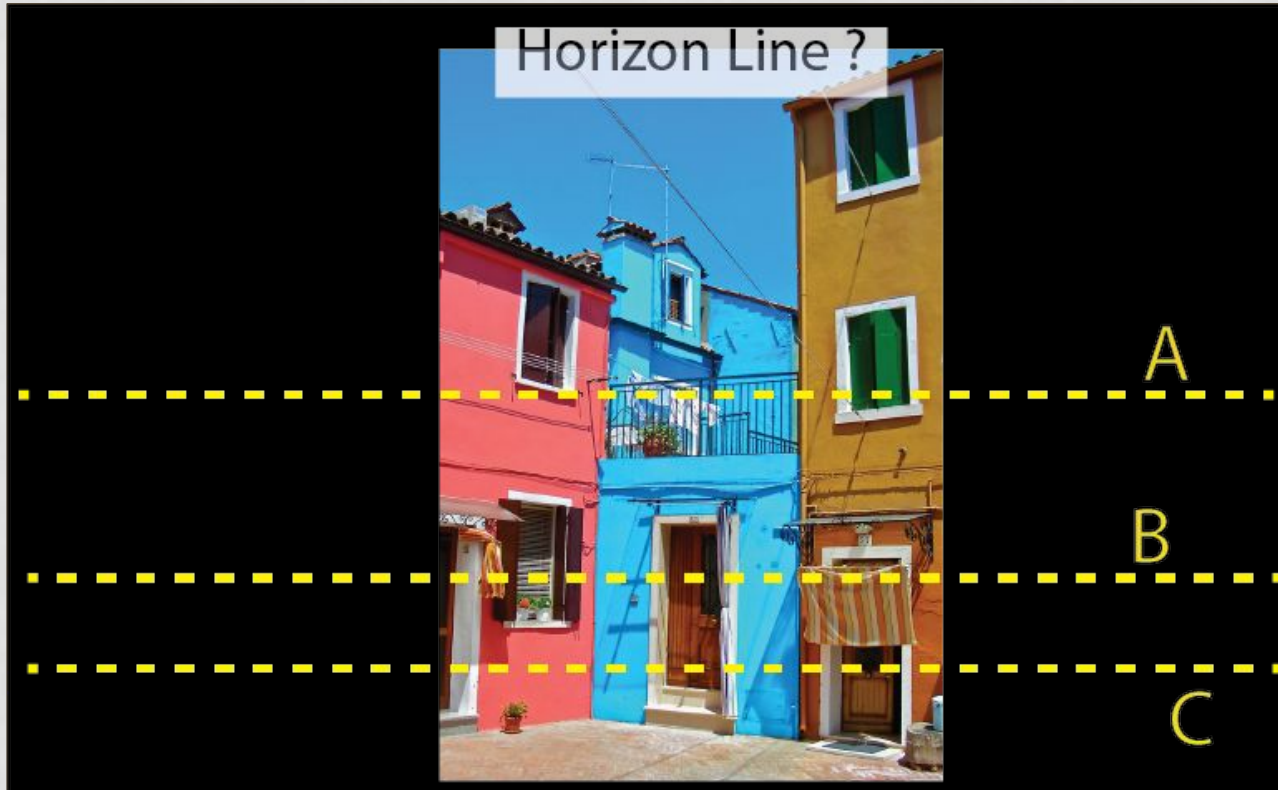


# PERSPECTIVE

Horizon Line ?



# PERSPECTIVE



# PERSPECTIVE

“Tracing”

- Real World
- Photo



# PERSPECTIVE EXERCISE 2



Eyelevel?

# PERSPECTIVE EXERCISE 2

Eyelevel / Horizon Line



# PERSPECTIVE EXERCISE 2



# PERSPECTIVE EXERCISE 2



# PERSPECTIVE EXERCISE 2



Eyelevel / Horizon Line

# PERSPECTIVE



What is the process? (1) Find Eye Level

# PERSPECTIVE



# PERSPECTIVE

2 - Point perspective



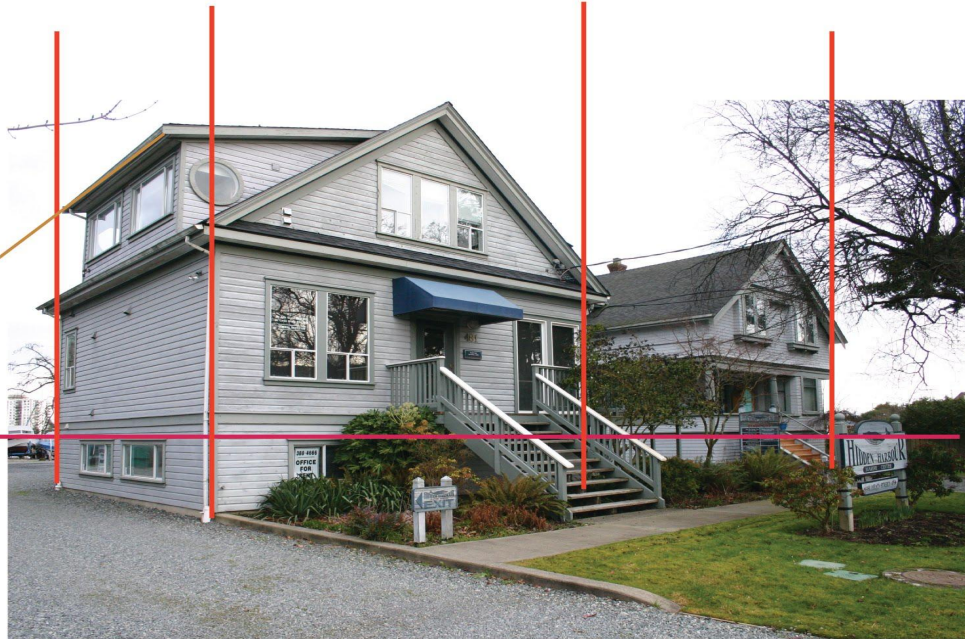
Simplification: Vertical Lines parallel

# PERSPECTIVE



# PERSPECTIVE

Top Line



# PERSPECTIVE

Vanishing Points



# PERSPECTIVE

## Vanishing Points



Second vanishing point

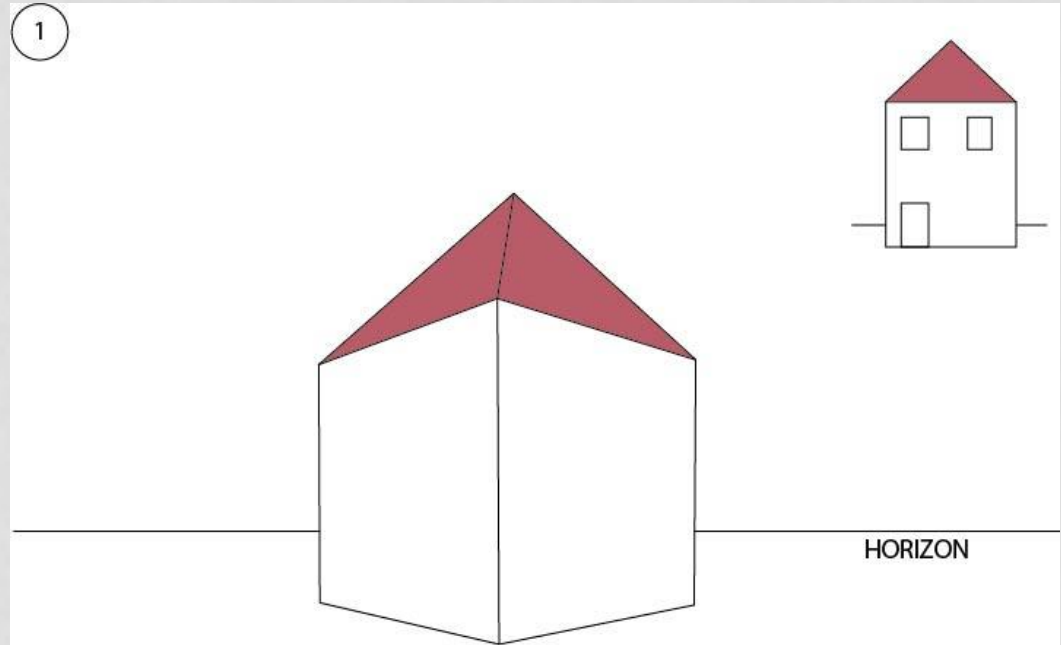
# PERSPECTIVE



Parallel faces have the same Vanishing Point!

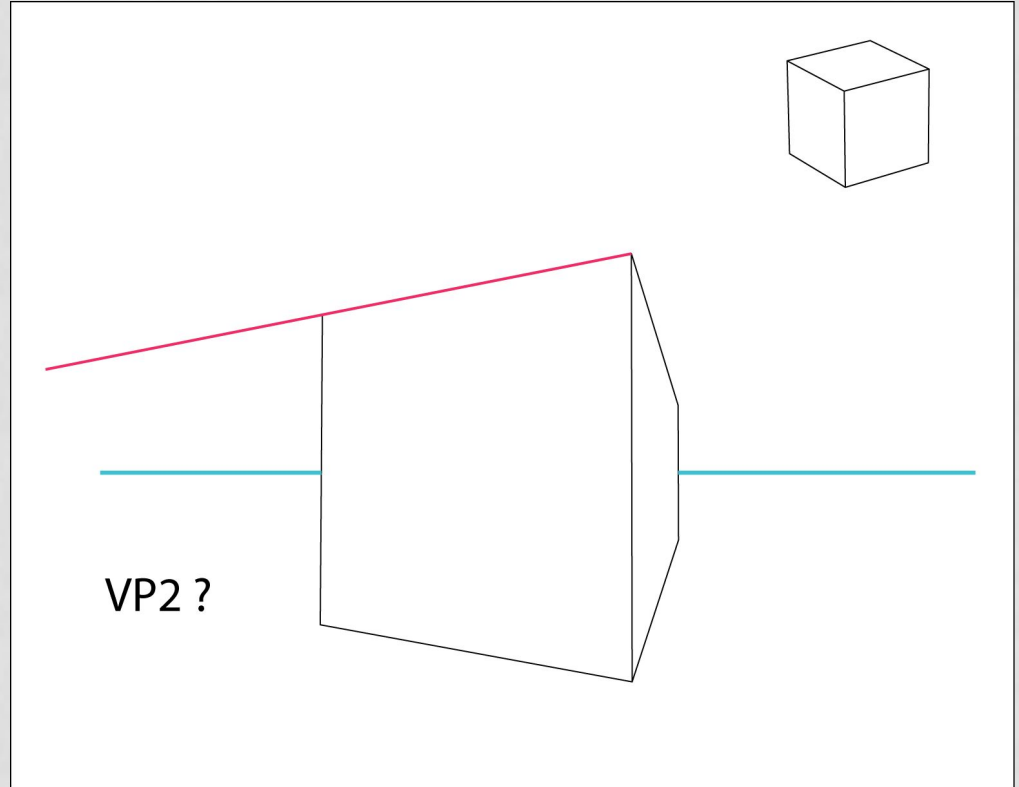
# PERSPECTIVE EXERCISE 1

- Which lines are truly horizontal?
- Find Vanishing Points
- Construct doors and windows for each side



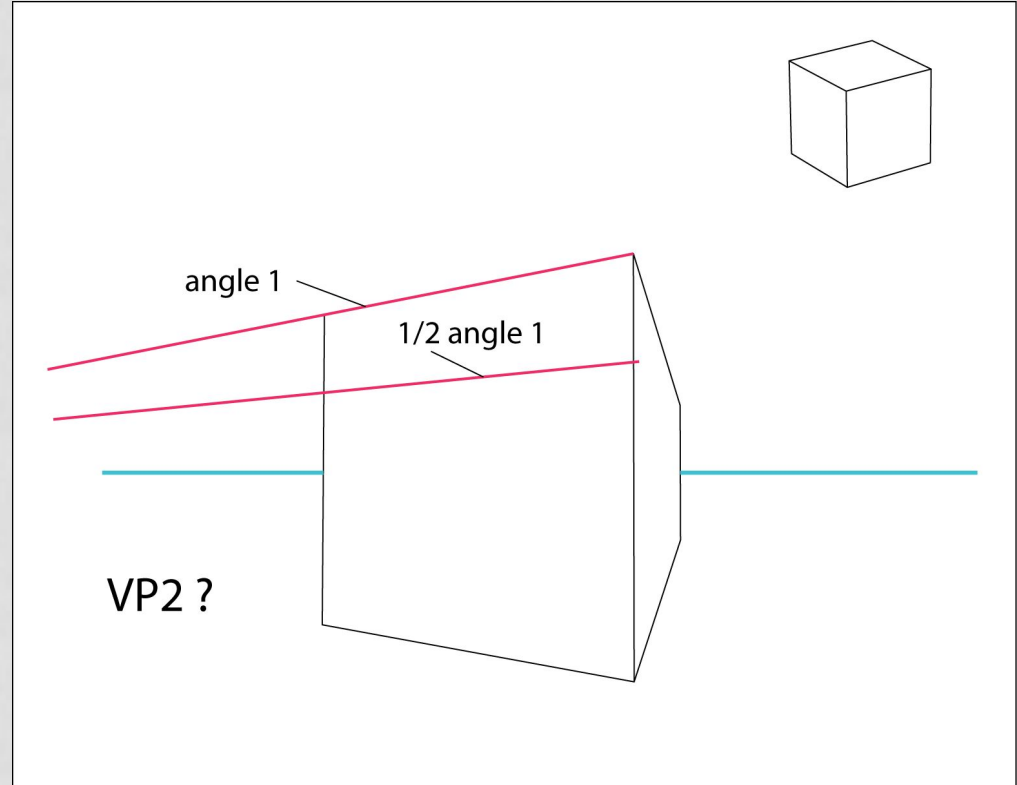
# PERSPECTIVE EXERCISE 2

- What if the Vanishing Point is off the page?



# PERSPECTIVE EXERCISE 2

- What if the Vanishing Point is off the page?



# PERSPECTIVE

Where is the  
Horizon Line  
/ Eye Level?



# PERSPECTIVE

HL



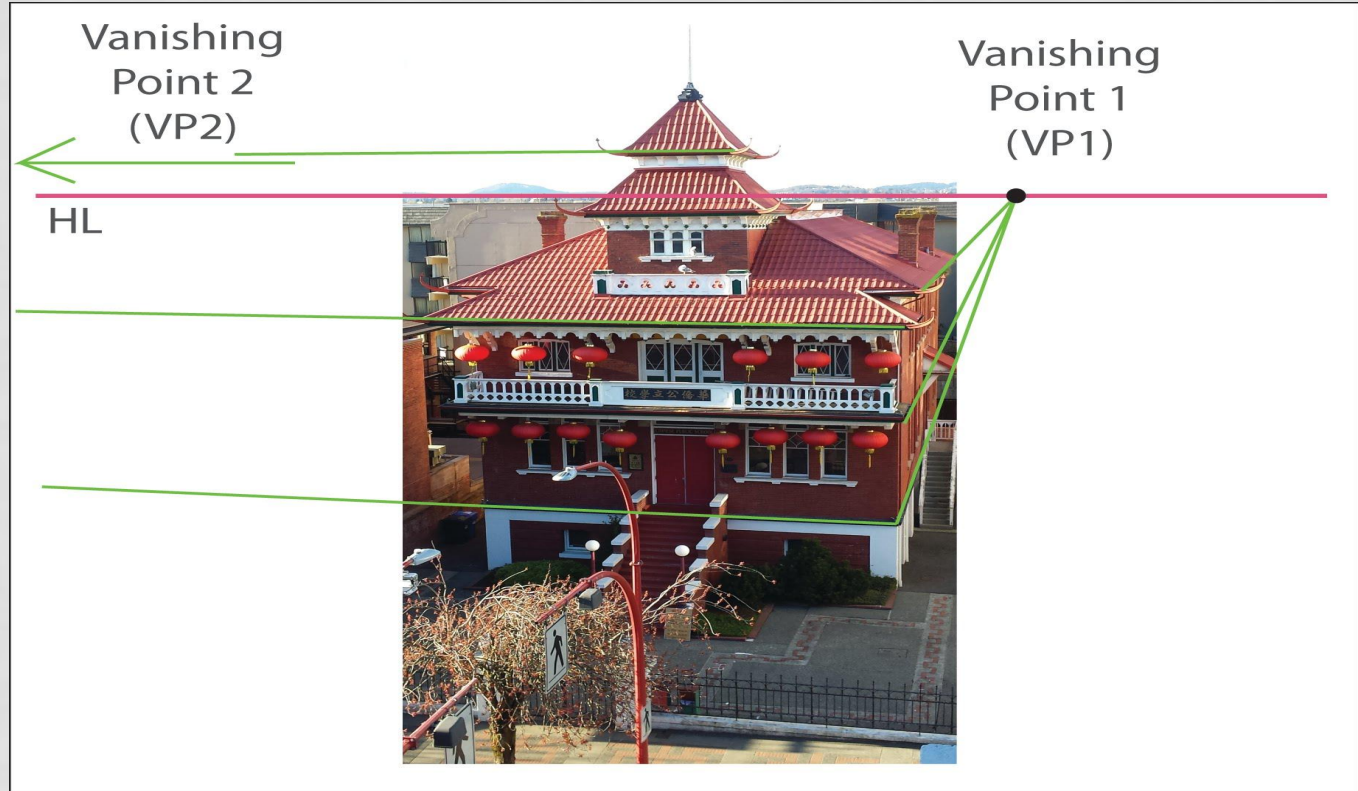
# PERSPECTIVE

HL

Vanishing  
Point 1  
(VP1)



# PERSPECTIVE



# PERSPECTIVE EXERCISE

- From one selected photo (Perspective):
  - Draw perspective view on your sketch paper (omit details!)
    - Find Horizon Line = Eye Level
    - Start with first side (e.g. North or East elevation)
    - Find Vanishing Point 1 for this side (top line meets Eye Level)
    - Connect more construction lines to Vanishing Point

# PERSPECTIVE EXERCISE

- From one selected photo (Perspective):
  - Continue from previous sketch:
  - Repeat for Vanishing Point 2 for the other side (plane)
  - Are there other (parallel) planes that share VP1 or VP2?

# PERSPECTIVE



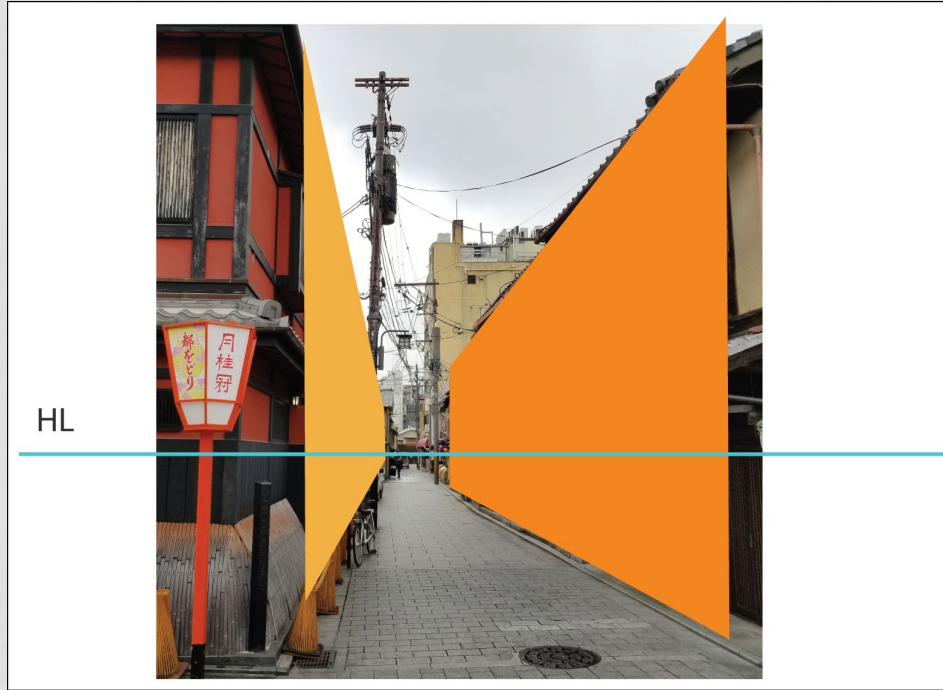
1 - POINT PERSPECTIVE

# PERSPECTIVE



PARALLEL PLANES → SAME VANISHING POINT!

# PERSPECTIVE



FIND HORIZON LINE ( = EYE LEVEL)

# PERSPECTIVE



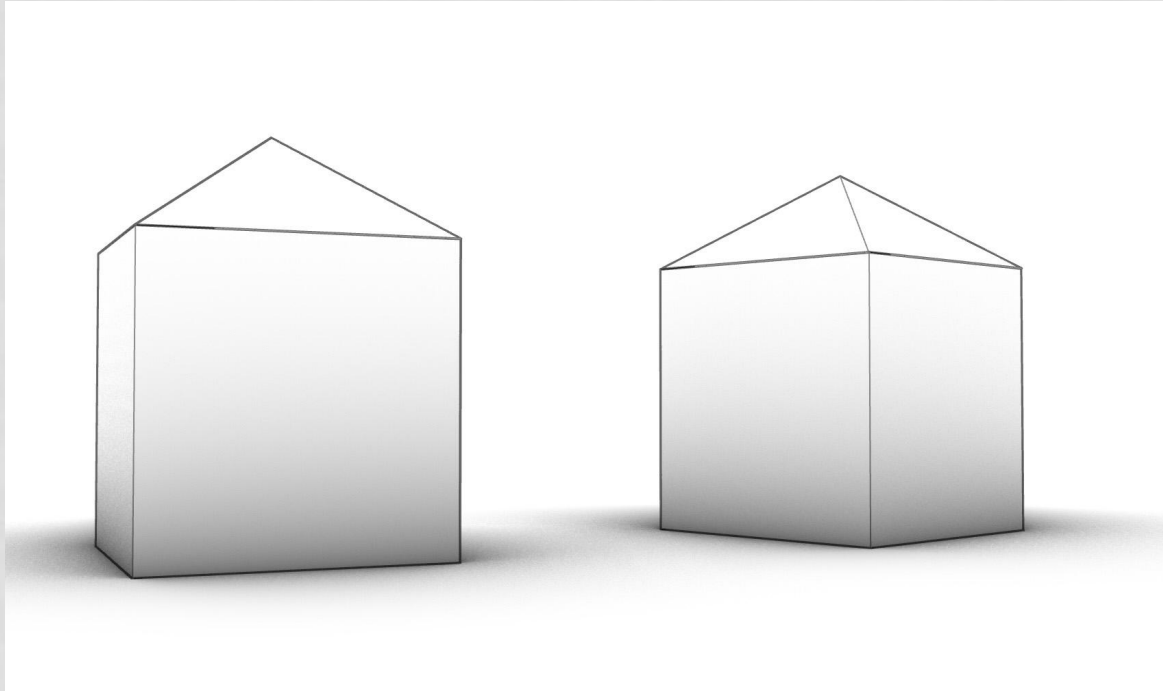
FIND VANISHING POINT

# PERSPECTIVE



VANISHING LINES MEET AT SINGLE VP

# PERSPECTIVE



FORESHORTENING

# PERSPECTIVE

- Is the observer standing or sitting?

