

# Introduction to Watercolours 2025

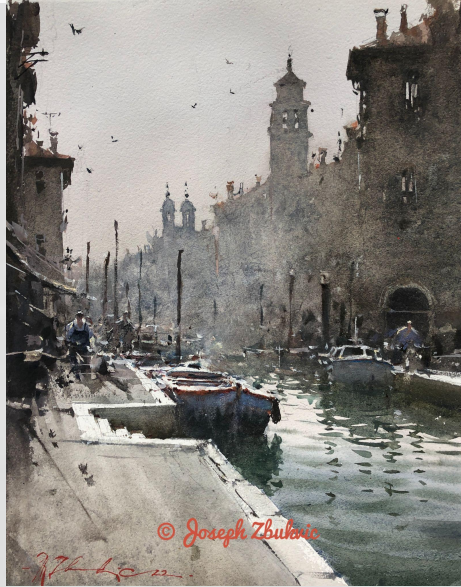
# Overview

- Day 1 Materials / Washes / Demo / Practice
- Day 2 Colour Mixing / Practice
- Day 3 Drawing / Wet into Wet / Practice
- Day 4 Values / Layering
- Day 5 Practice
- Day 6 Practice

# URBAN SKETCHING VICTORIA

- A Global Community of Artists Who Practice and Share On-Location Drawing
- Victoria Local Chapter on Facebook

# STUDIO PAINTING



Joseph Zbukvic



Adrian Homersham

# MY URBAN SKETCHING

Pencil:

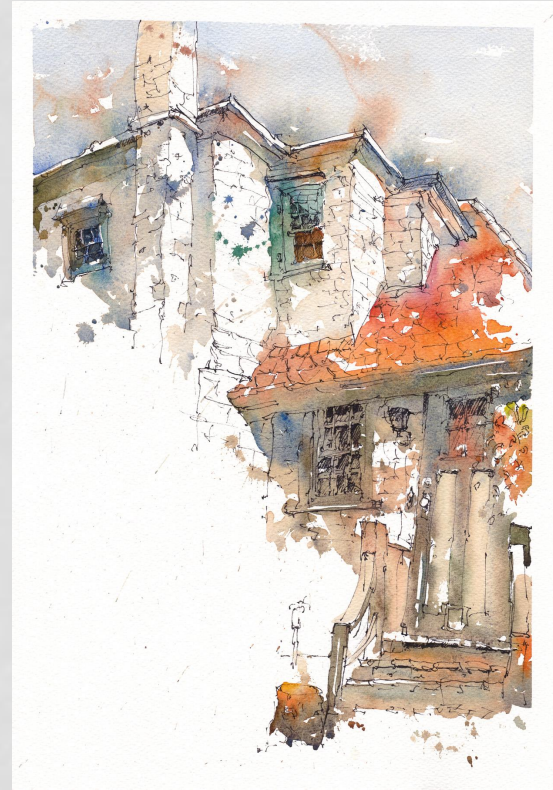
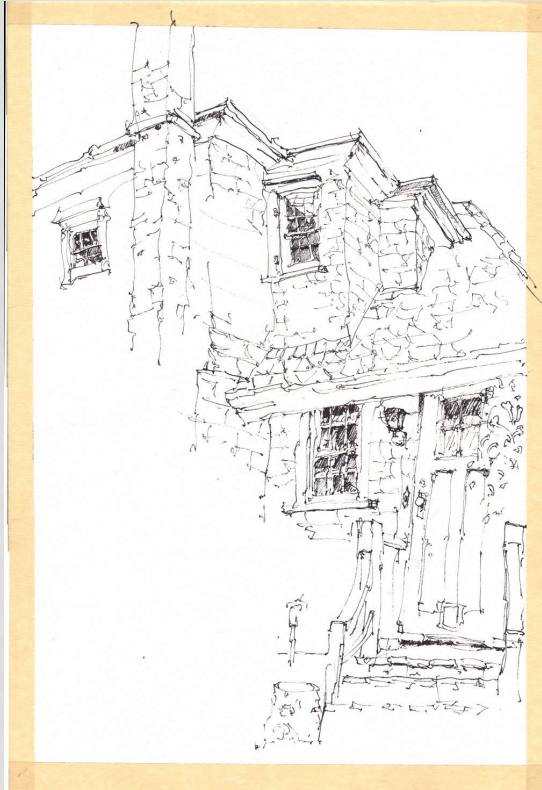
As little as possible

Ink:

As much as needed

Watercolour:

As much as necessary



# EQUIPMENT

- Comfort





# MATERIALS

- Sketching Tools 1

- HB Pencil
  - Waterproof (pigment)
- Uni-Ball Vision Fine Ink Pen
  - Tombow Fudenosuke H/S
  - Molotow Blackliner S
- (Brush Pen)
  - Pentel Art Brush
- Eraser



# PAPER

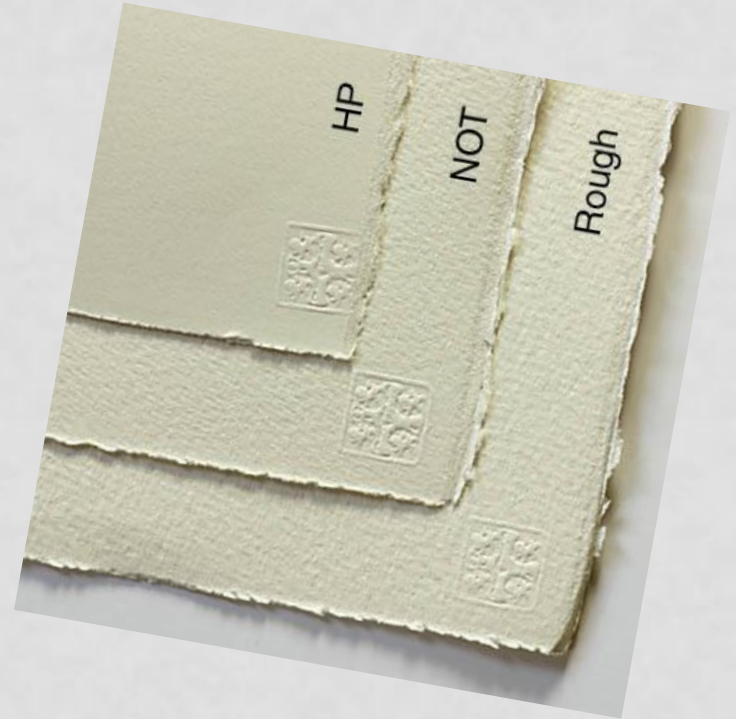
- Cheap sketchbook for layout and doodles:
  - Opus
  - Strathmore etc.





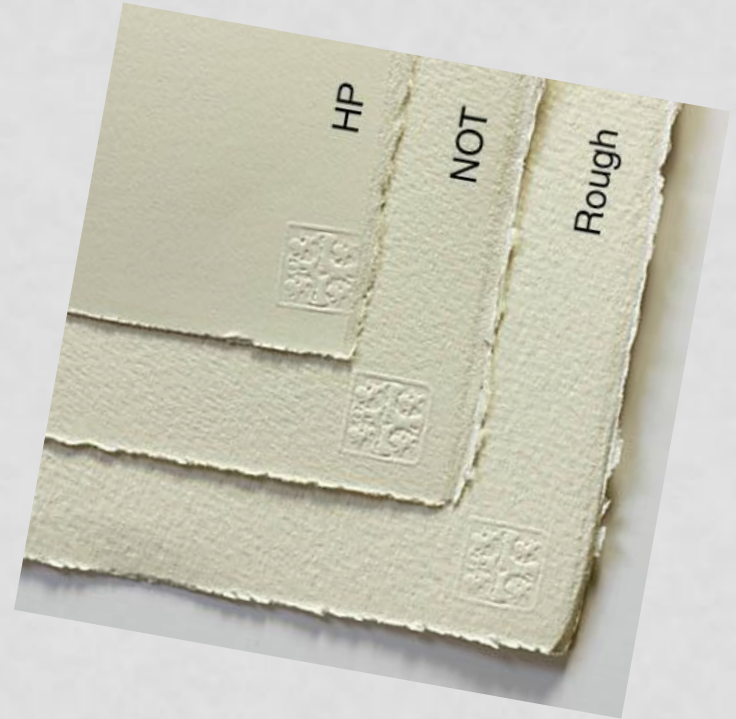
# PAPER 1

- Sheets 100% Cotton
- Hot Pressed, Cold Pressed (NOT), Rough
  - Arches, Waterford Sanders, Fabriano Artistico
- Full sheet (30 x 22 in)
- Half sheet (22 x 15 in) or (30 x 11)
- Quarter sheet (11 x 15 in)
- Exotic formats



# PAPER 2

- Weight
  - 90 lb (200g)
  - 140 lb (300g)
  - 300 lb (600g)



# PAPER 3

- Watercolour Books and Pads
  - Hahnemuehle
  - Moleskin
  - Stillman & Birn Beta



# PAPER 4

- Watercolour Books and Pads
  - Make your own book
  - Re-purpose book



# PAPER 5

- Travelogue
  - Collage with text, tickets, postcards...

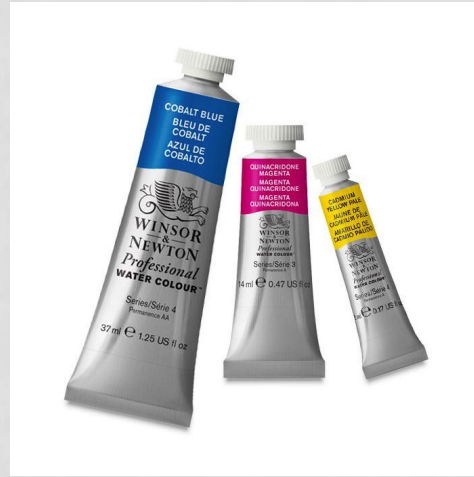




# PAINTING TOOLS

## Watercolour Set

- Pan or tubes?





# PAINTING TOOLS

## Watercolour Pan Set

- Choose full pans!
- 12 pigments are enough!
- Flat mixing area, the larger, the better



Half pans



Full pans

# PAINTING TOOLS

## Mixing Palette

- The larger wells, the better



# PAINTING TOOLS

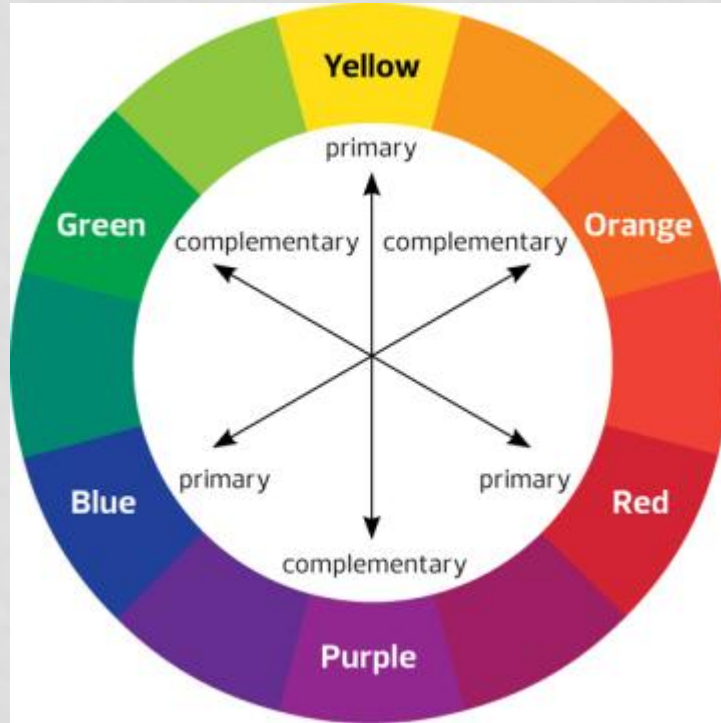
- Brushes Size 8 - 20
  - Synthetic hair
  - (Natural hair, e.g. Kolinsky, Squirrel)
- Water Container
- Small Spray Bottle
- Paper Towel



Escoda Versatil #14

# PAINTING TOOLS

- Color Wheel



# PAINTING TOOLS

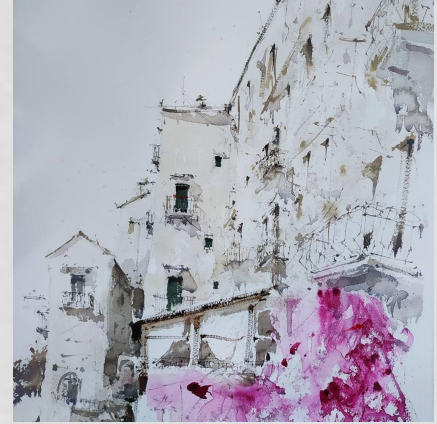
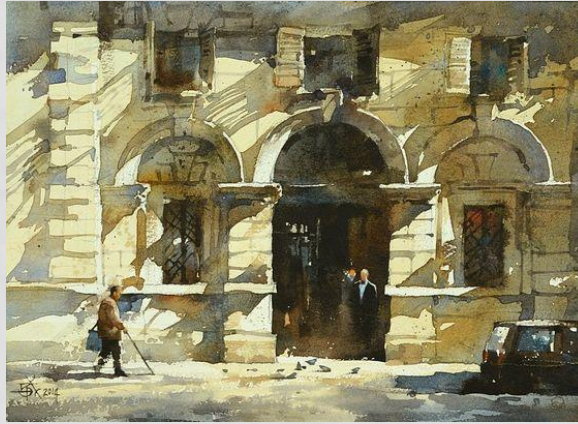
- Bring your own photos
- Good contrast
- Composition





# CONTRAST

- Shade - Shadow - Sunlight



- A. Castagnet - Chien Chung Wei - R. Zangarelli



# WATERCOLOUR WISDOM

- Plan carefully, draw and paint fast

# WATERCOLOUR - BASICS



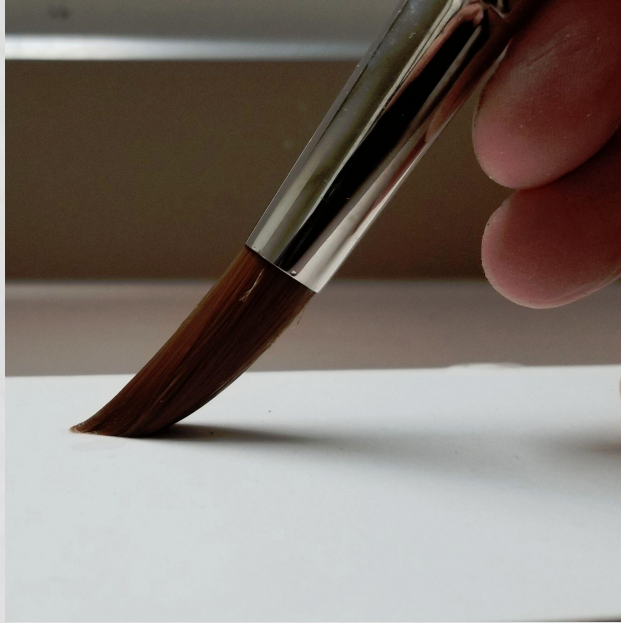
Take care of your brushes!

# WATERCOLOUR - BASICS



Taking paint from the pans

# WATERCOLOUR - BASICS



- Detailwork



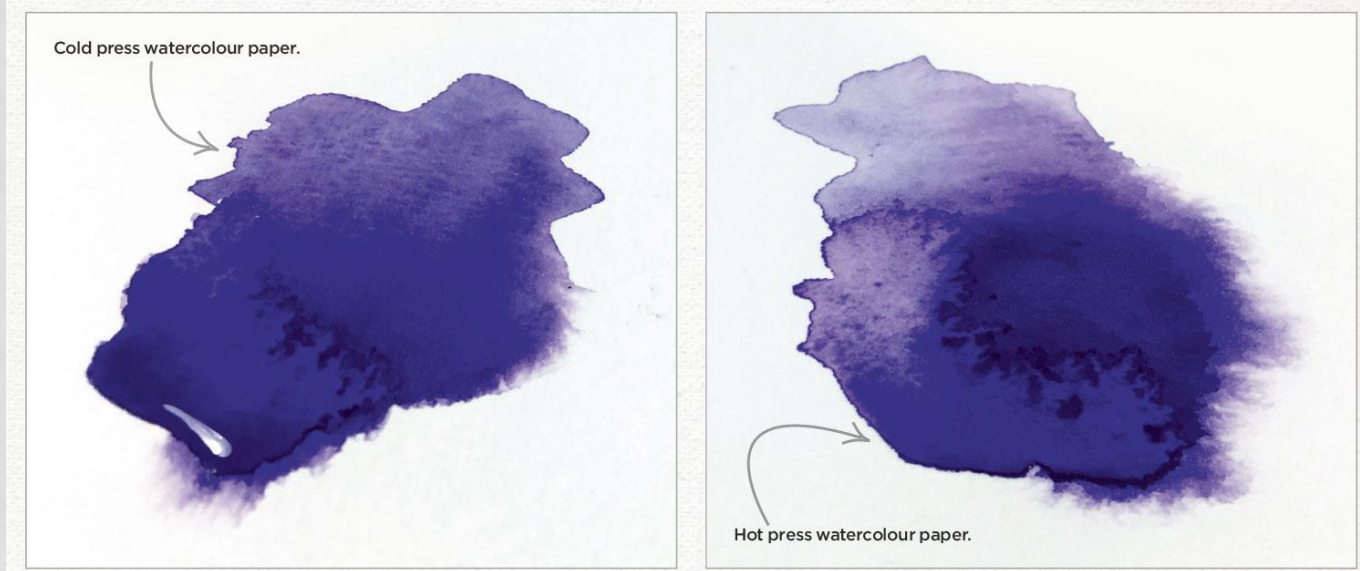
- Washes

# WATERCOLOUR - BASICS



- Brushstroke Direction

# WATERCOLOUR - BASICS

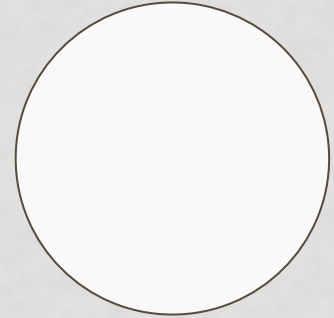
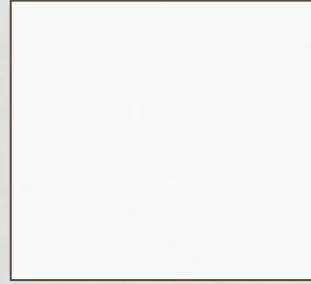


- Water-Pigment Ratio
- How do we control this?



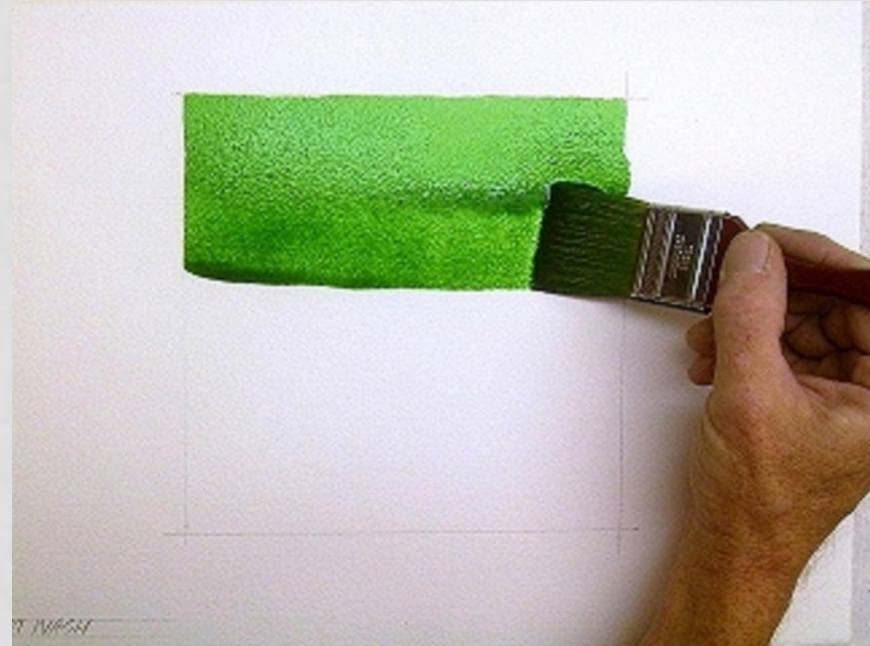
# WATERCOLOUR - BORDERS

- Draw a 3" x 3" inch square
- Draw a 3" x 3" inch circle
- Follow the lines on the inside



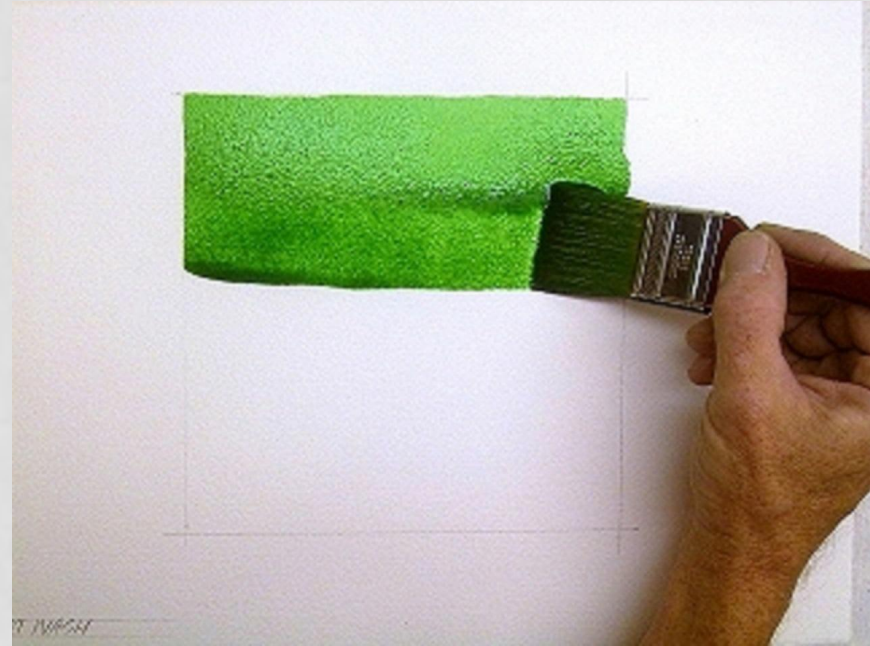
# WATERCOLOUR - WASH

- Draw a 4" x 4" in square
- Use a larger brush
- Angle the paper
- Pre-mix a generous amount of pigment and water
- Pull the wash horizontally across, creating a bead
- Continue down, the top part of the brush touches the bead



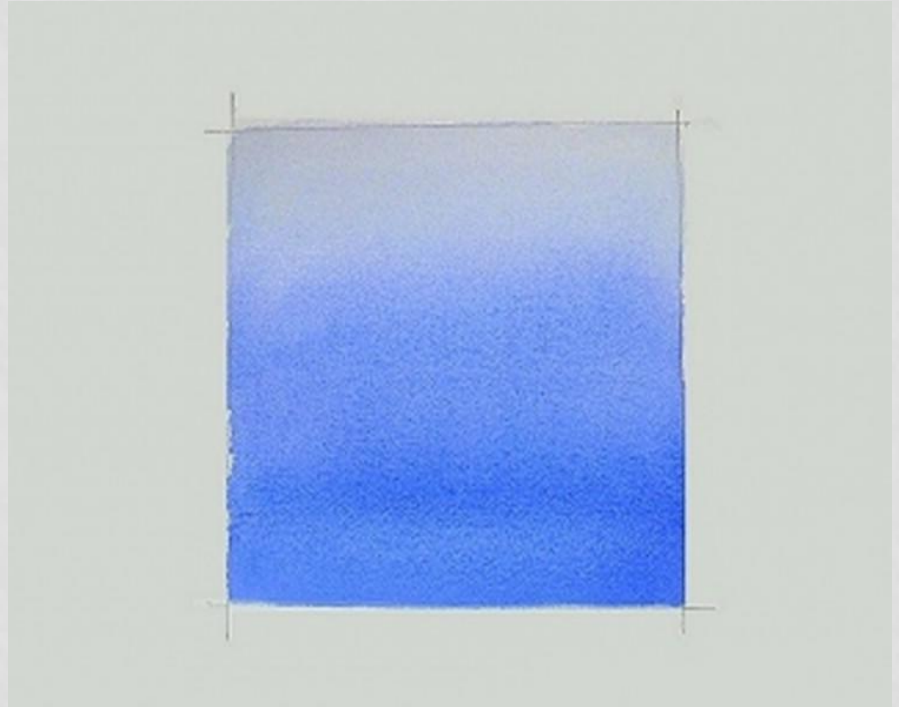
# WATERCOLOUR - WASH

- AS before, but:
- Observe the borders!



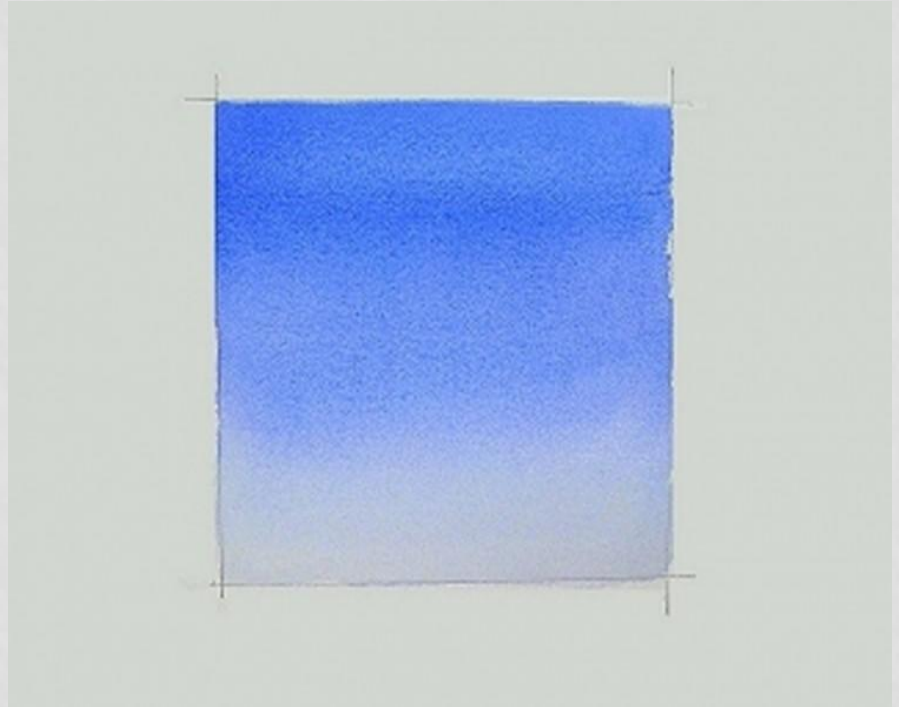
# GRADUATED WASH

- Draw a 4 x 4 in square
- Use a larger mop brush
- Angle the paper
- Use a generous amount of medium intensity paint
- Pull the wash horizontally across creating a bead
- Continuously add pigment to your paint mix



# GRADUATED WASH

- Draw a 4 x 4 in square
- Use a larger mop brush
- Angle the paper
- Use a generous amount of medium intensity paint
- Pull the wash horizontally across creating a bead
- Continuously add water to your paint mix



# VARIEGATED WASH

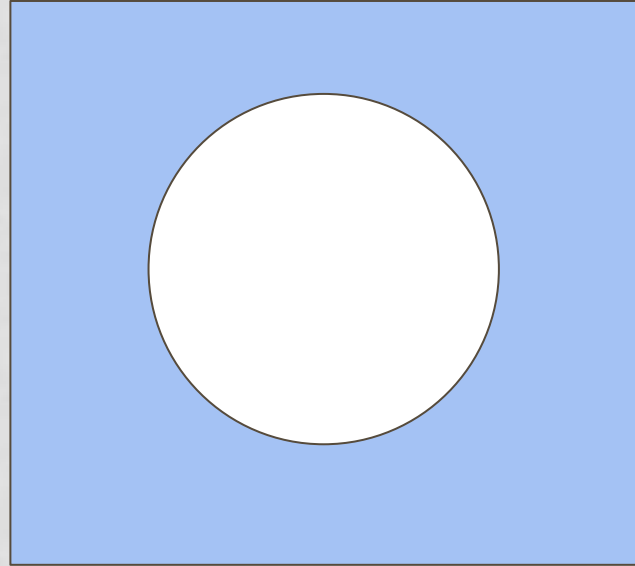
- Draw a 4 x 4 in square
- Use a large mop brush
- Angle the paper
- Use a generous amount of medium intensity paint
- Start with first colour wash
- Continuously add second colour to paint mix until you have a pure second colour





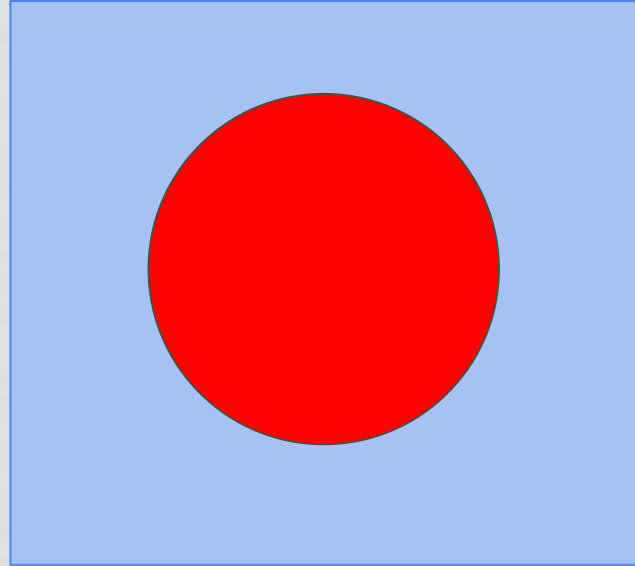
# VARIEGATED WASH

- Draw a 4 x 4 in square
- Draw a 3 x 3 circle



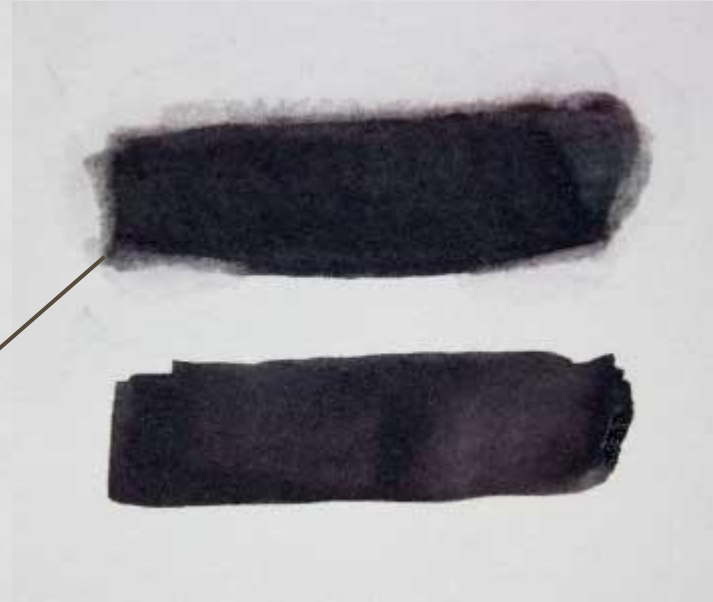
# VARIEGATED WASH

- Draw a 4 x 4 in square
- Draw a 3 x 3 circle



# HARD AND SOFT EDGES

- Start with a stroke of medium intensity paint
- Clean your brush and shake off excess water
- Soften edge with damp brush



# HARD AND SOFT EDGES

Practice :  
Peach  
Burano  
Mushroom



# OPTIONAL: VALUES

- Five Boxes
- Sequence



# OPTIONAL: PAINT FROM PHOTO

- Simple drawing
- Sequence?

