

# URBAN SKETCHING 2025



# Overview

- Day 1 Materials / Perspective
- Day 2 Warm Up / Sketching
- Day 3 Warm Up / Composition
- Day 4 Warm Up / Value
- Day 5 Warm Up / Practice
- Day 6 Warm Up / Practice

# WHAT IS URBAN SKETCHING?

- Nonprofit Organization formed in 2007:  
<http://www.urbansketchers.org/>
- A Global Community of Artists Who Practice and Share On-Location Drawing
- Victoria Local Chapter on Facebook

# WHAT IS URBAN SKETCHING?



Kiah Kiean



João Paulo  
Albergaria

# WHAT IS URBAN SKETCHING?



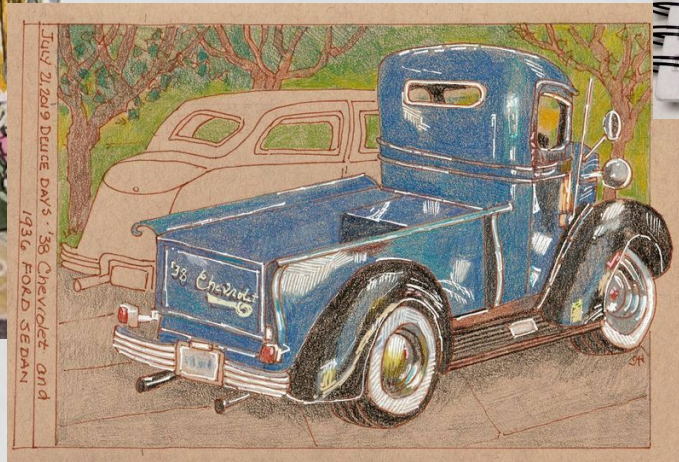
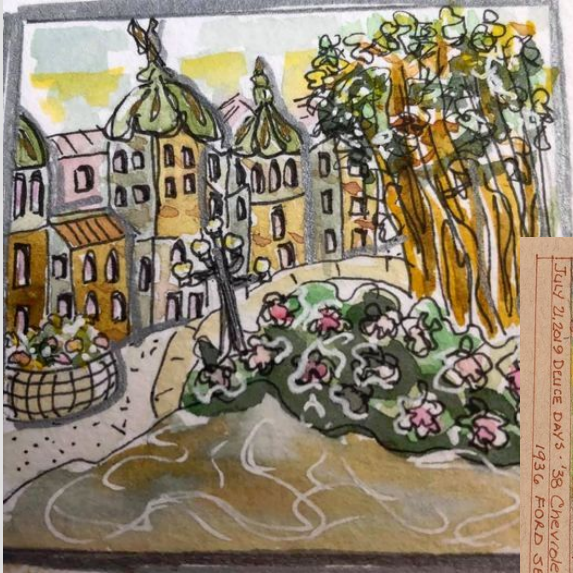
Marc Taro Holmes



Simone Ridyard

# WHAT IS URBAN SKETCHING?

Victoria Urban Sketchers  
Works by: Cheryl, Inge,  
Lindsay



# WHAT IS URBAN SKETCHING?

## Victoria Urban Sketchers

Public group · 433 members



+ Invite

Share

Discussion

Featured

People

**Events**

Media

Files

### Upcoming events

Find events

Create event



THIS SATURDAY AT 9:30 AM

#### Sketch Finnerty Gardens

Created by Cheryl Hebb

Interested

Going

Invite



### Past events



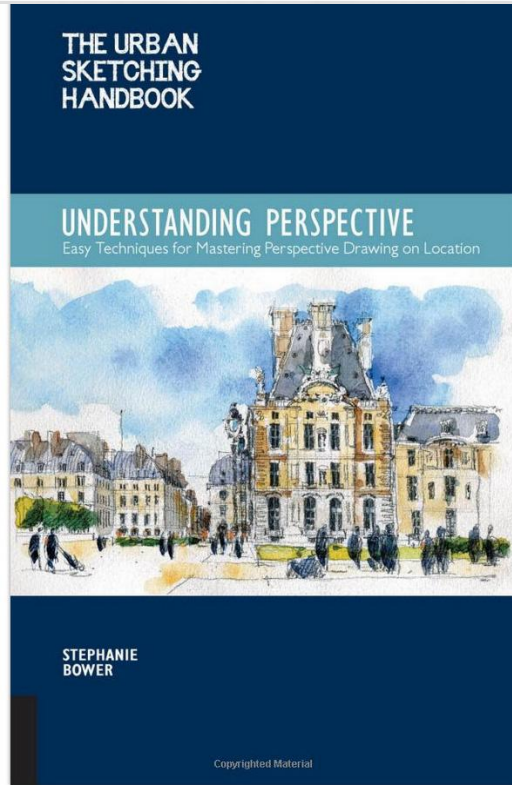
SAT, MAY 11

#### Running of the Goats!

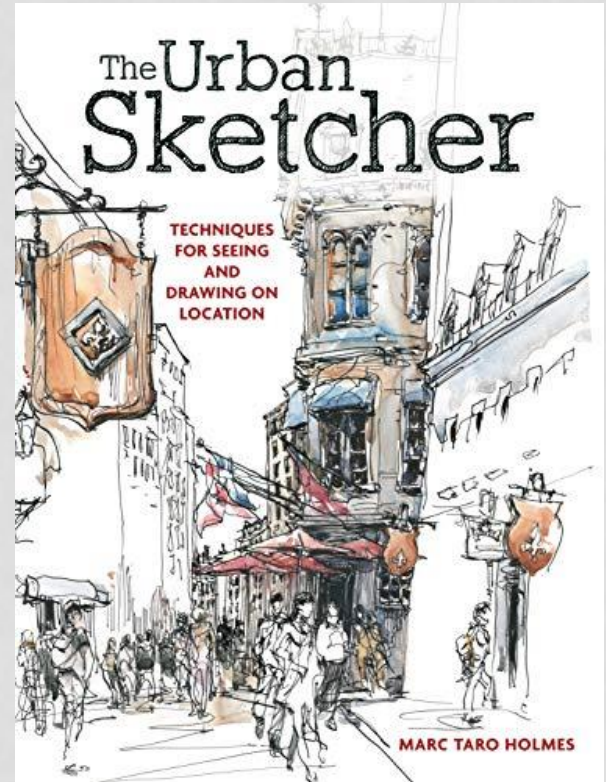
Created by Cheryl Hebb



# REFERENCES



Books by:  
Marc Taro Holmes (right)  
Stephanie Bower (left)





# MY URBAN SKETCHING

Pencil:

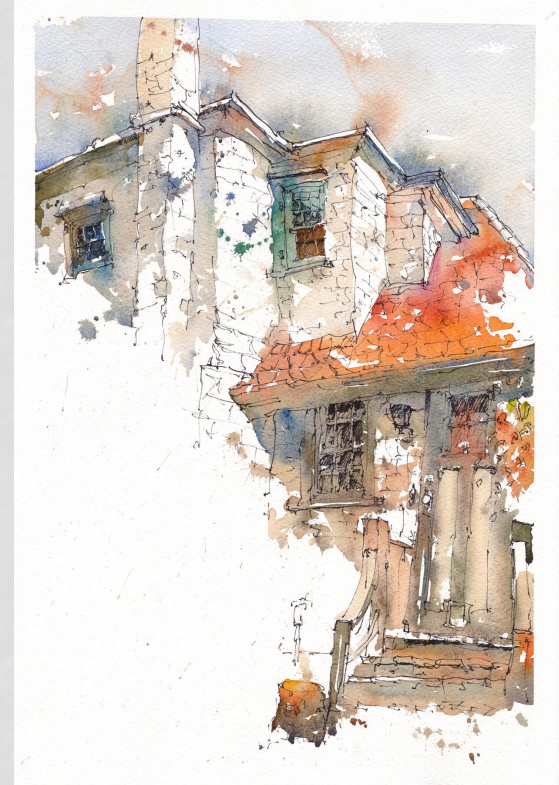
As little as possible

Ink:

As much as needed

Watercolour:

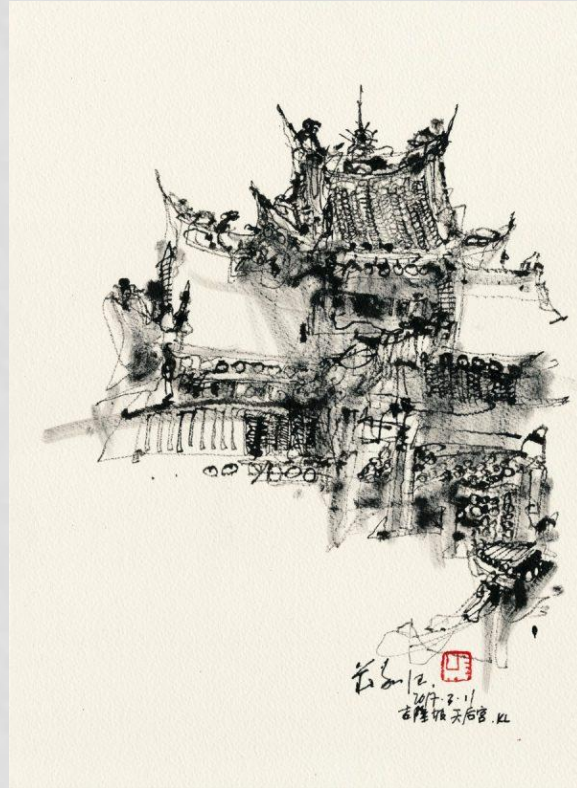
As much as necessary



# WHY INK ?

- Permanence
- Easy to transport
- Value range

Kiah Kian



# MATERIALS

- Go light, less is more
  - All equipment can fit in a mid-sized backpack
- Be comfortable, be flexible
  - Chair, small umbrella (silver!), sun hat
- Plan ahead
  - Local art supply (paper)
  - Water supply etc.



# MATERIALS

- Comfort



# MATERIALS

- Sketching Tools 1

- HB Pencil
- Uni-Ball Fine
  - Waterproof (pigment)
- (Brush Pen)
  - Kuretake
  - Pentel Art Brush
  - Molotow Blackliner S
- Eraser



# MATERIALS

- Sketching Tools 2
  - Pen and nib
  - Use waterproof ink!



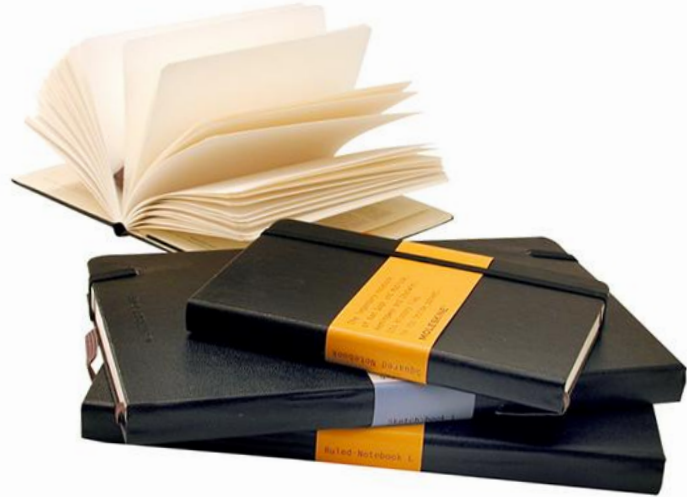
# MATERIALS

- Sketching Tools 3
  - Fountain pen
  - Problem: Most waterproof inks will clog your fountain pen, so use:
    - Noodler's Bulletproof
    - **Platinum Carbon Ink**
    - De Atramentis Ink



# Sketchbooks

- Watercolour Books and Pads
  - Moleskine
  - Hahnemuehle
  - Make your own book





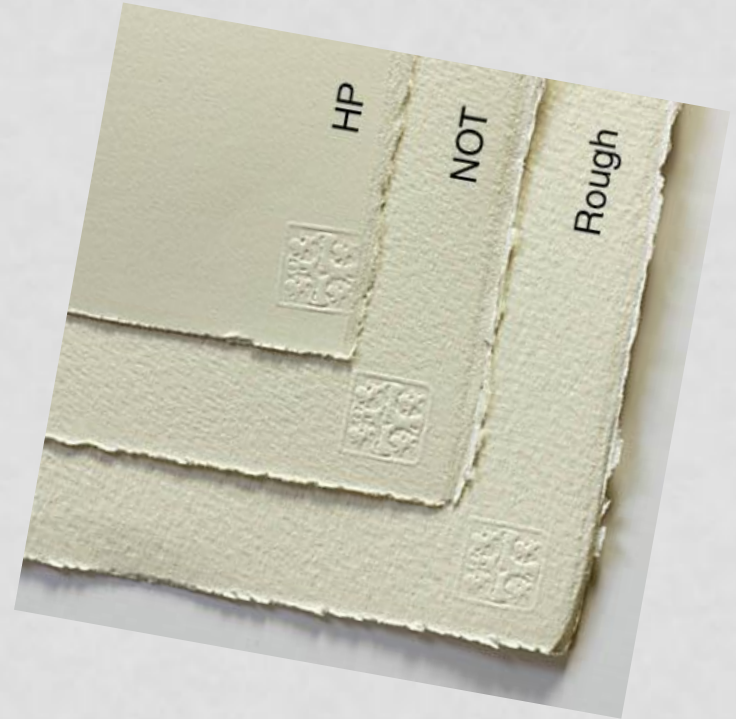
# PAPER

- Cheap sketchbook for layout and doodles:
  - Opus
  - Strathmore etc.



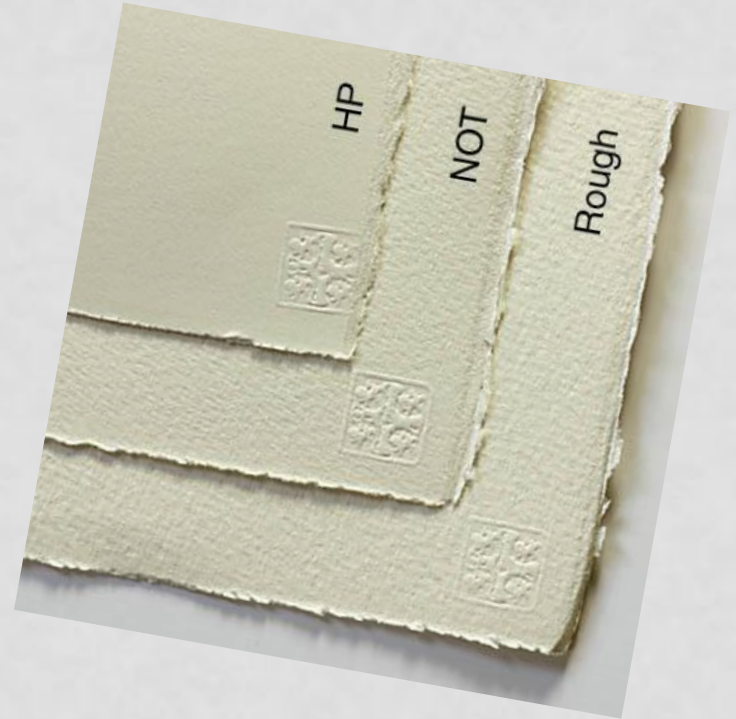
# PAPER 1

- Sheets 100% Cotton
- Hot Pressed, Cold Pressed (NOT),  
Rough
  - Arches, Waterford Sanders,  
Fabriano Artístico, Opus Finest
- Full sheet (30 x 22 in)
- Half sheet (22 x 15 in) or (30 x 11)
- Quarter sheet (11 x 15 in)
- Exotic formats



# PAPER 1

- Weight
  - 90 lb (200g)
  - 140 lb (300g)
  - 300 lb (600g)



# PAPER 2

- Blocks
  - Glued on outside
  - Buy 100% Cotton!



# Warm Up

- Warm up on cheap paper 2 x 5 minutes

# PERSPECTIVE

## Representation of Depth:

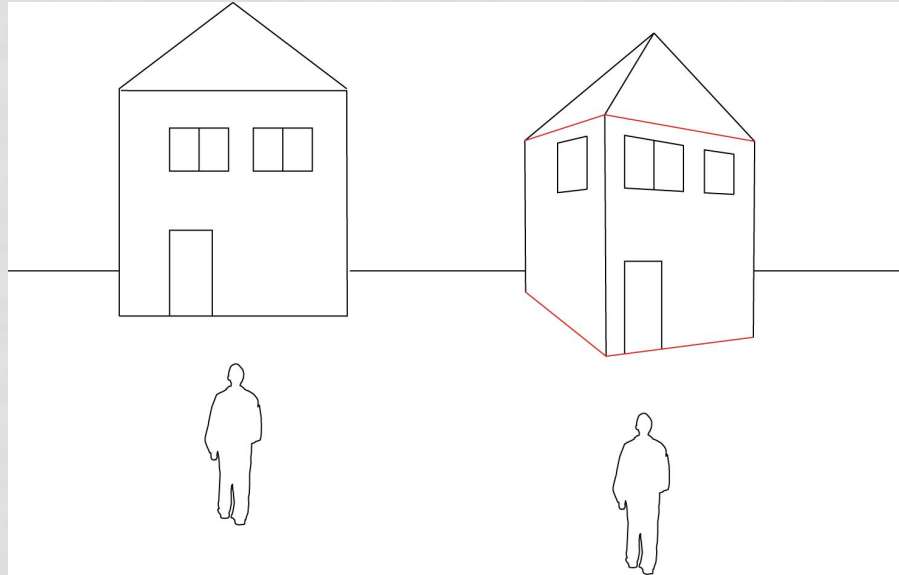
- Contrast (Less contrast in the background)
- Color (cooler in the background at daytime)
- Linear Perspective



# LINEAR PERSPECTIVE

Straight on view  
“Elevation”

Horizontal lines  
remain horizontal  
in drawing



Angled View  
“Perspective”

Horizontal lines  
appear tilted

# PERSPECTIVE

“Tracing”

- Real World
- Photo





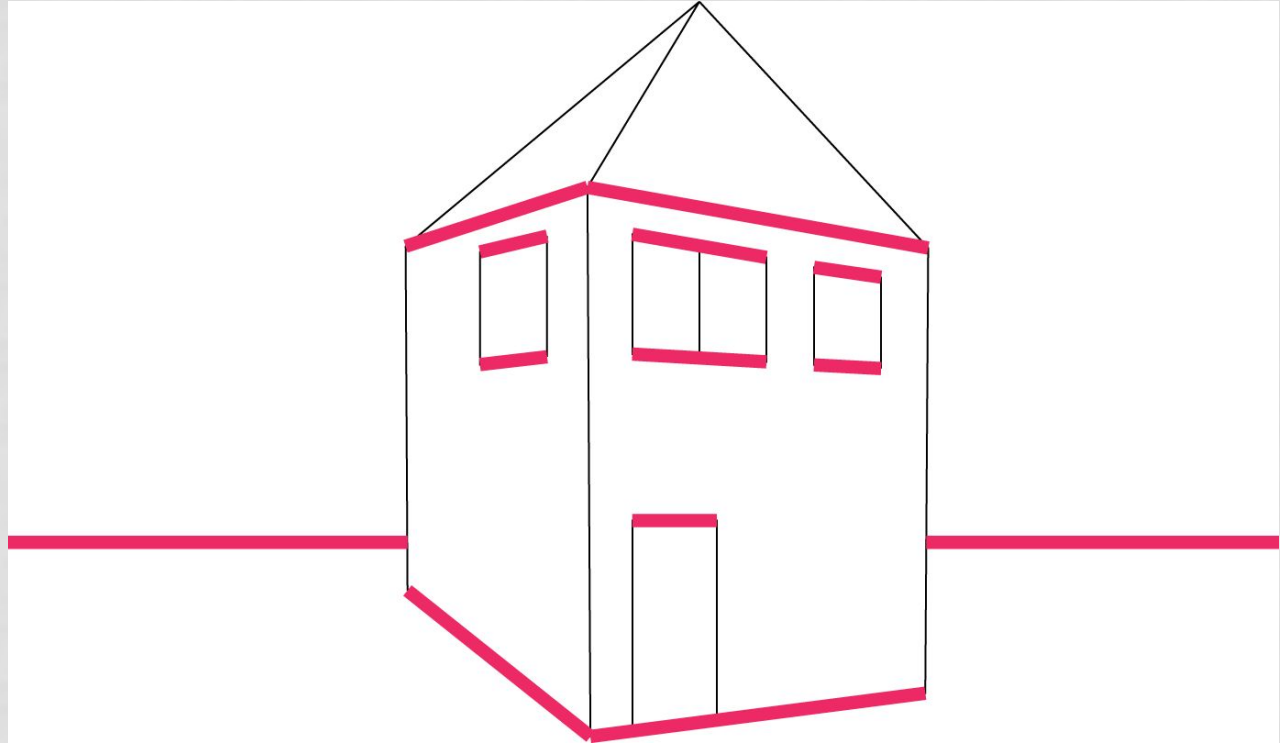
# PERSPECTIVE

Practice



# LINEAR PERSPECTIVE

Only use lines  
that are parallel  
to the ground!!!  
“True horizontal”



# LINEAR PERSPECTIVE

Straight on View  
“Elevation”

Lines parallel to the ground  
remain horizontal on paper



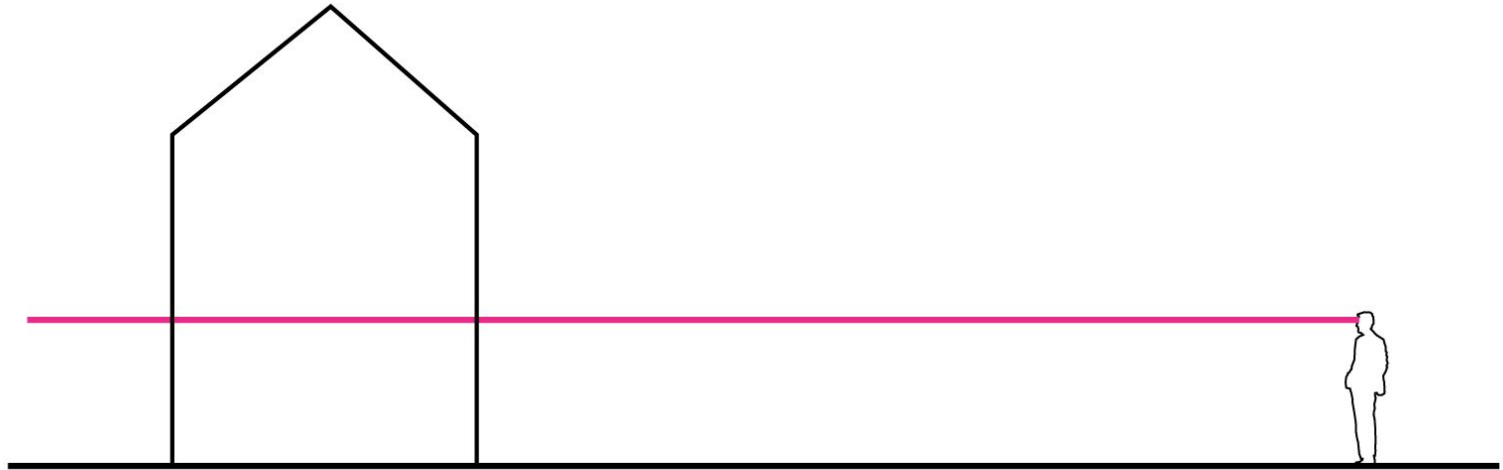
# LINEAR PERSPECTIVE



Angled View  
“Perspective”

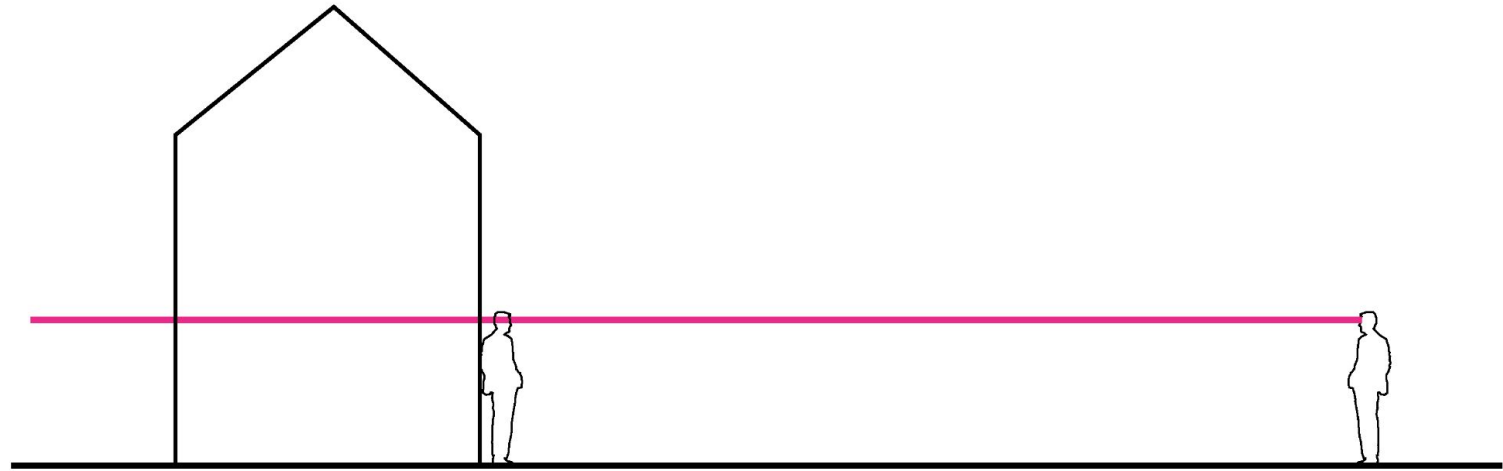
Lines parallel to the  
ground (true  
horizontal) appear  
tilted on photo and  
paper

# PERSPECTIVE



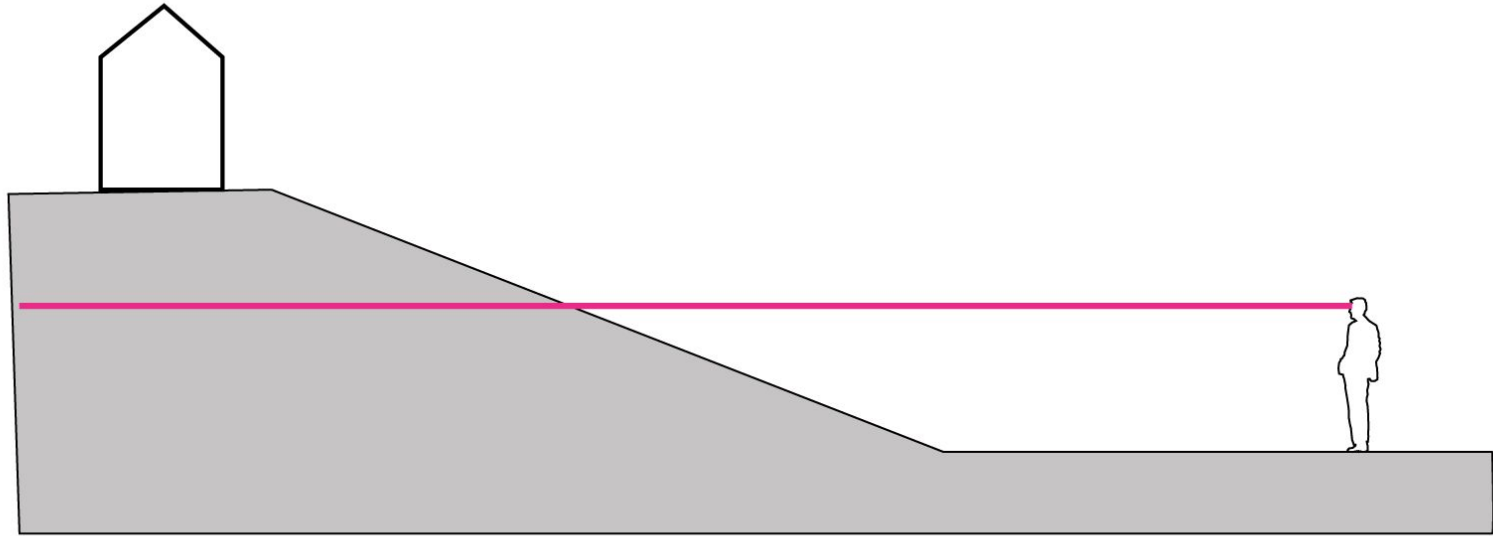
Eye Level=Horizon Line

# PERSPECTIVE



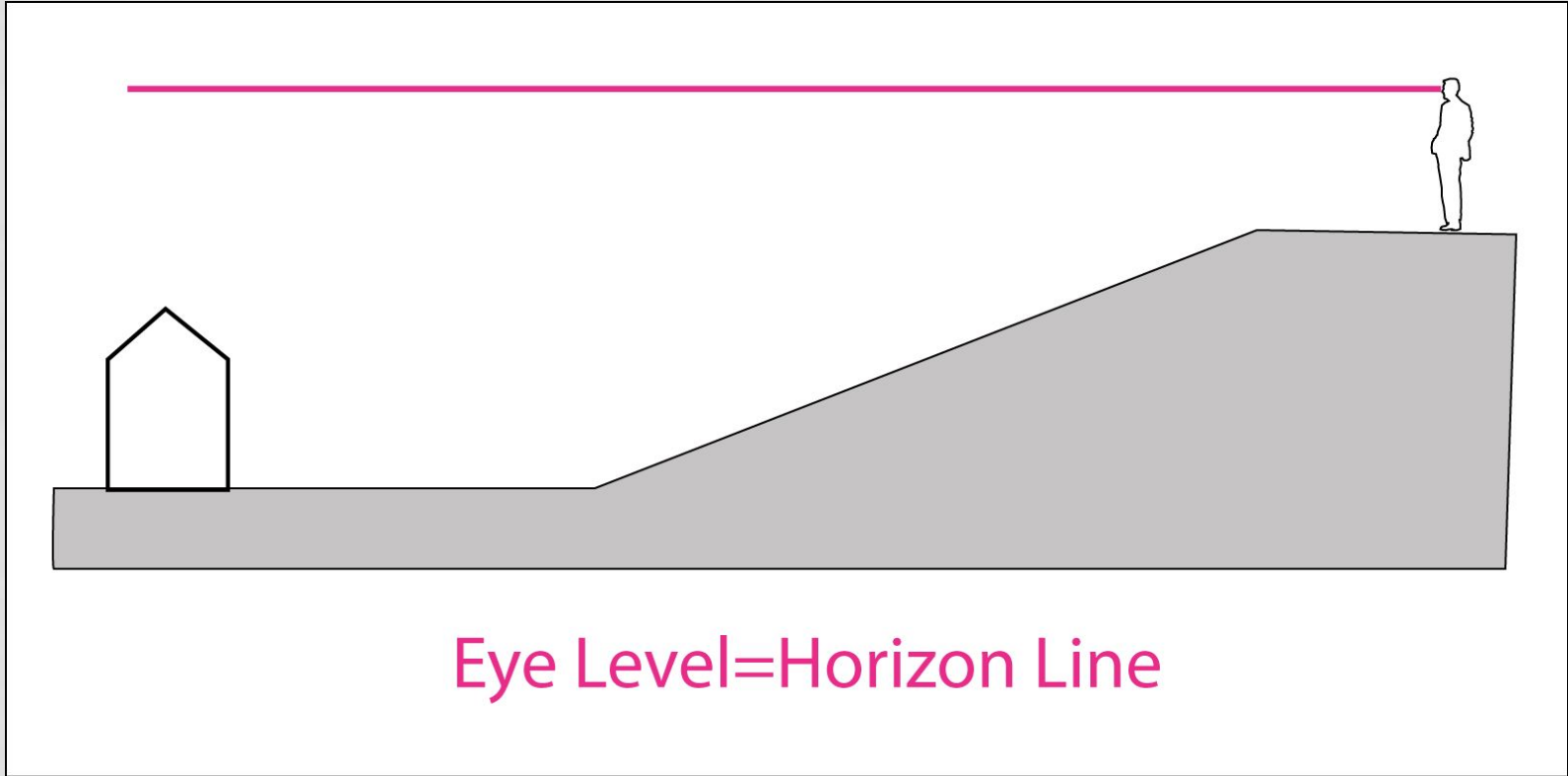
Eye Level=Horizon Line

# PERSPECTIVE



Eye Level=Horizon Line

# PERSPECTIVE





# PERSPECTIVE



# PERSPECTIVE



# PERSPECTIVE



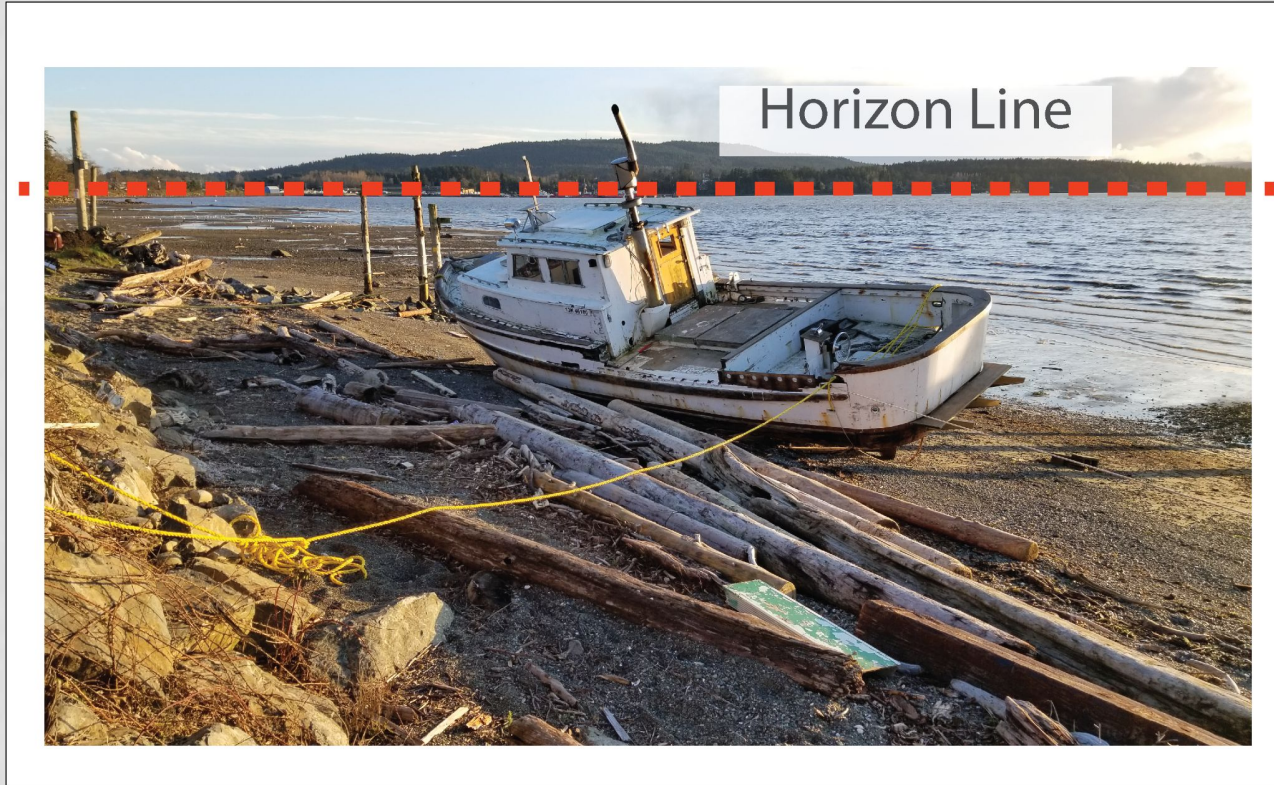
# PERSPECTIVE



# PERSPECTIVE



# PERSPECTIVE



# PERSPECTIVE

Horizon Line ?



# PERSPECTIVE

“Tracing”

- Real World
- Photo





# PERSPECTIVE EXERCISE 2



Eyelevel?

# PERSPECTIVE EXERCISE 2

Eyelevel / Horizon Line



# PERSPECTIVE EXERCISE 2



# PERSPECTIVE EXERCISE 2



# PERSPECTIVE EXERCISE 2



Eyelevel / Horizon Line

# PERSPECTIVE



What is the process? (1) Find Eye Level

# PERSPECTIVE



Eye Level = Horizon Line

# PERSPECTIVE

2 - Point perspective



Simplification: Vertical Lines parallel



# PERSPECTIVE



# PERSPECTIVE



# PERSPECTIVE

Vanishing Points



# PERSPECTIVE

## Vanishing Points



Second vanishing point

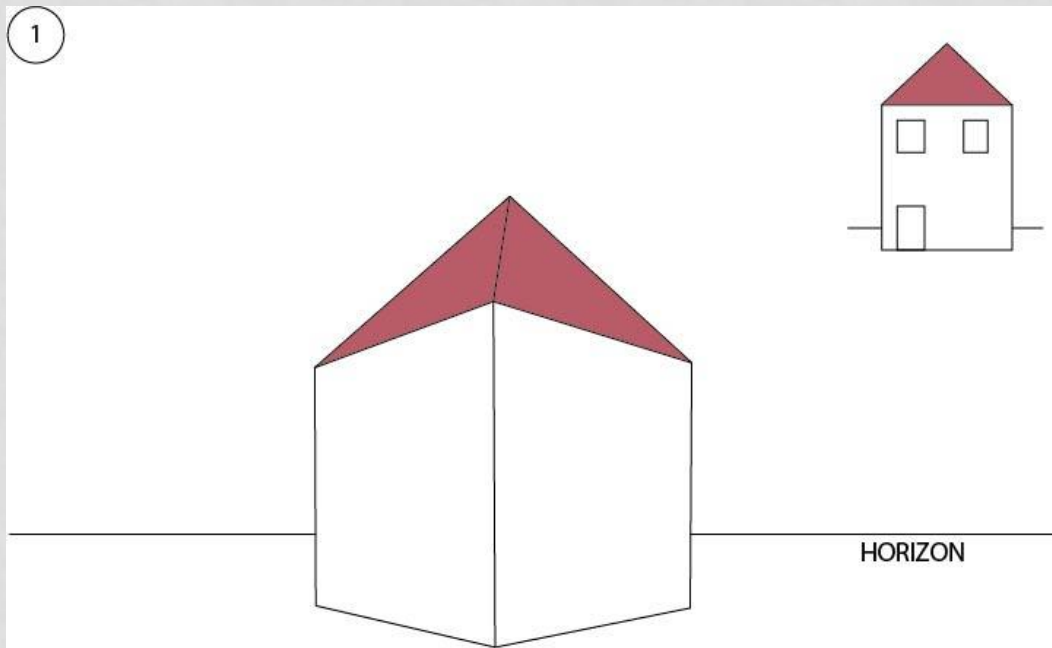
# PERSPECTIVE



Parallel faces have the same Vanishing Point!

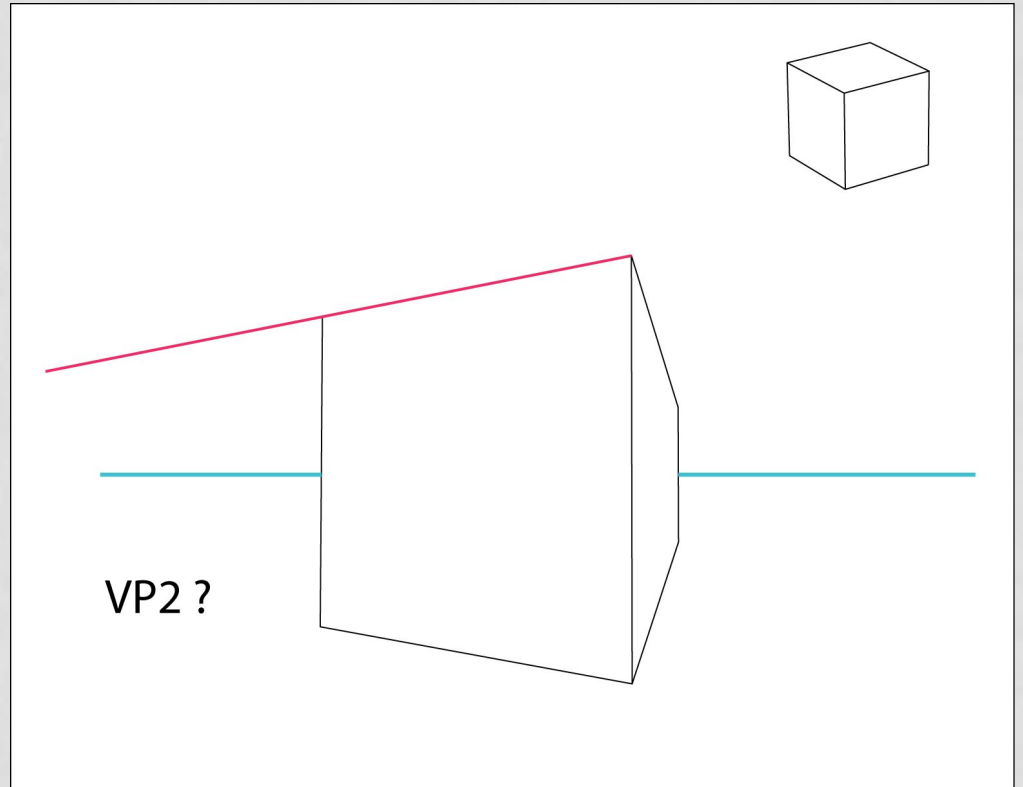
# PERSPECTIVE EXERCISE 1

- Which lines are truly horizontal?
- Find Vanishing Points
- Construct doors and windows for each side



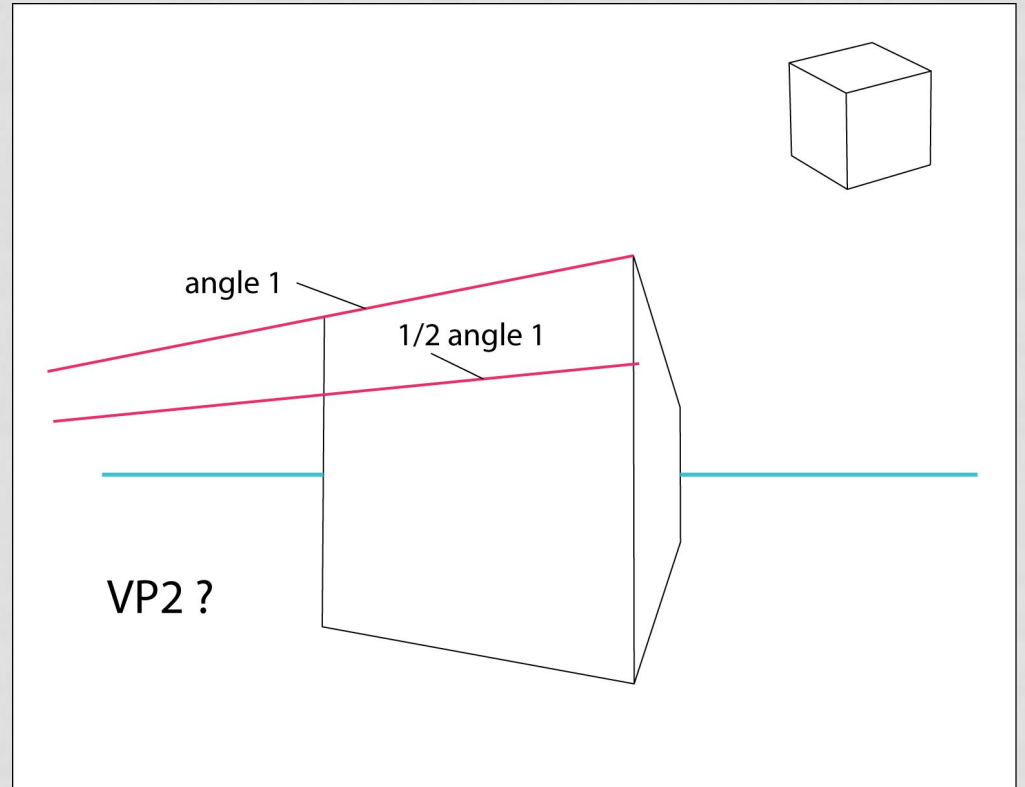
# PERSPECTIVE EXERCISE 2

- What if the Vanishing Point is off the page?



# PERSPECTIVE EXERCISE 2

- What if the Vanishing Point is off the page?





# PERSPECTIVE

Where is the  
Horizon Line  
/ Eye Level?



# PERSPECTIVE

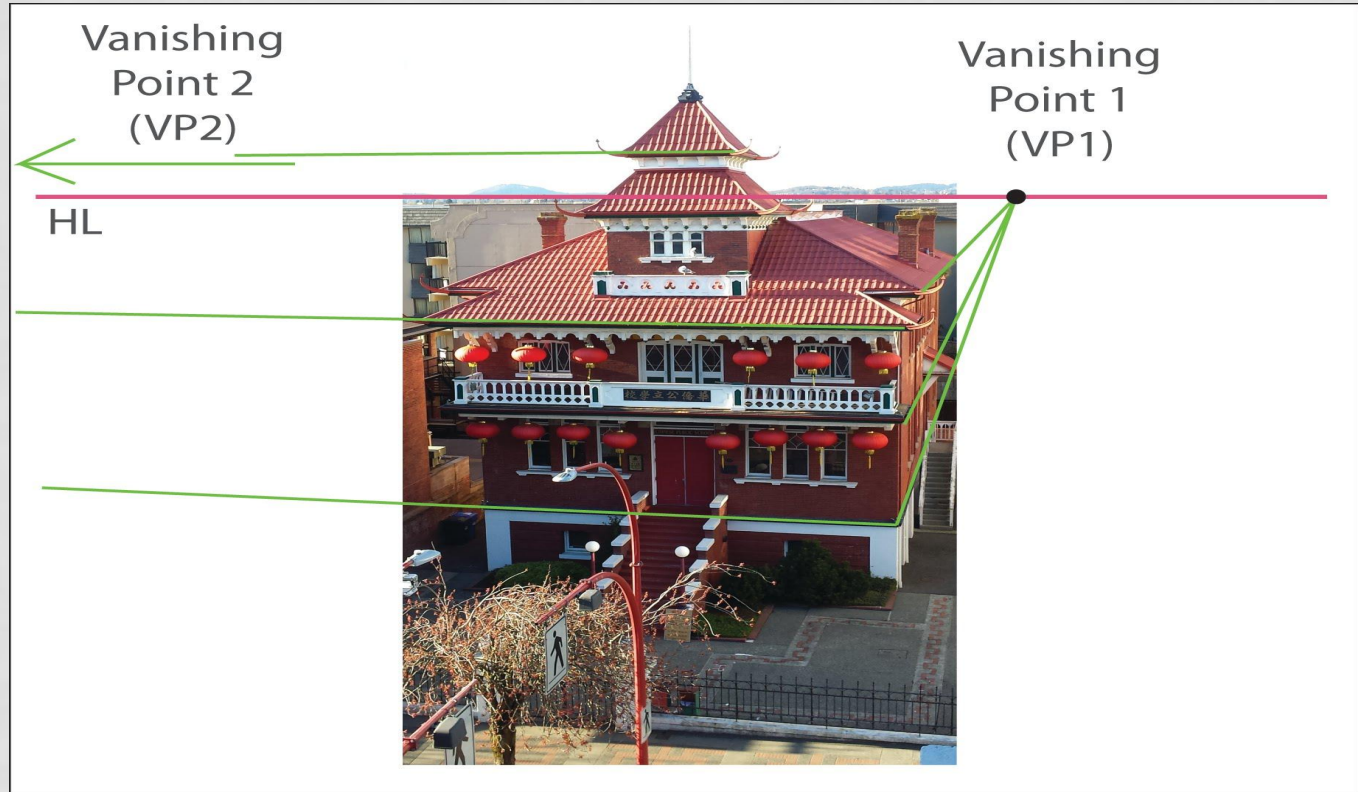
HL



# PERSPECTIVE



# PERSPECTIVE



# PERSPECTIVE EXERCISE

- From one selected photo (Perspective):
  - Draw perspective view on your sketch paper (omit details!)
    - Find Horizon Line = Eye Level
    - Start with first side (e.g. North or East elevation)
    - Find Vanishing Point 1 for this side (top line meets Eye Level)
    - Connect more construction lines to Vanishing Point

# PERSPECTIVE EXERCISE

- From one selected photo (Perspective):
  - Continue from previous sketch:
  - Repeat for Vanishing Point 2 for the other side (plane)
  - Are there other (parallel) planes that share VP1 or VP2?

# PERSPECTIVE



1 - POINT PERSPECTIVE

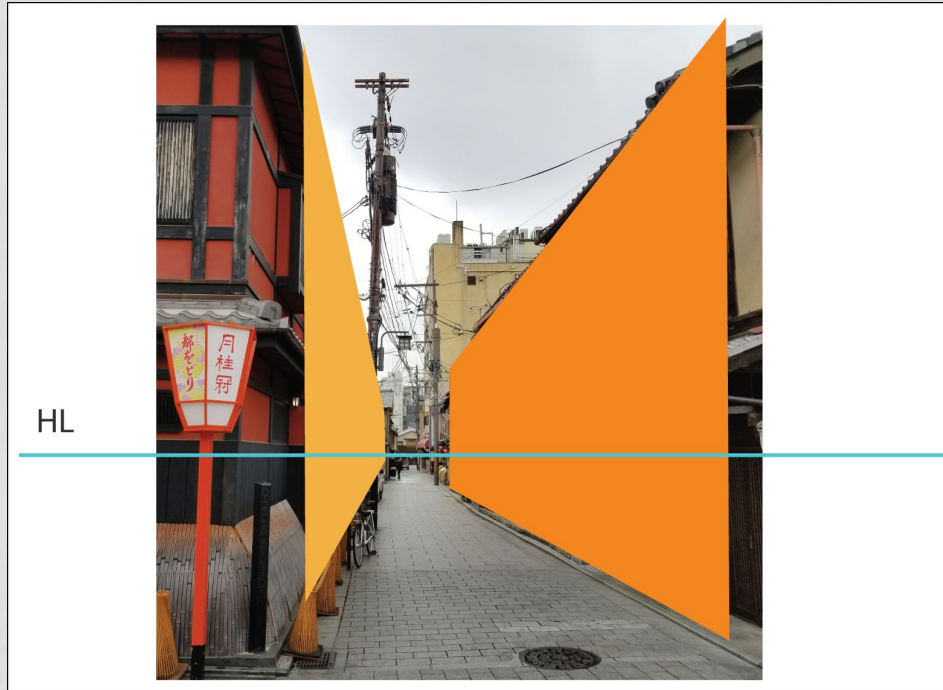
# PERSPECTIVE



PARALLEL PLANES → SAME VANISHING POINT!



# PERSPECTIVE



FIND HORIZON LINE (= EYE LEVEL)

# PERSPECTIVE



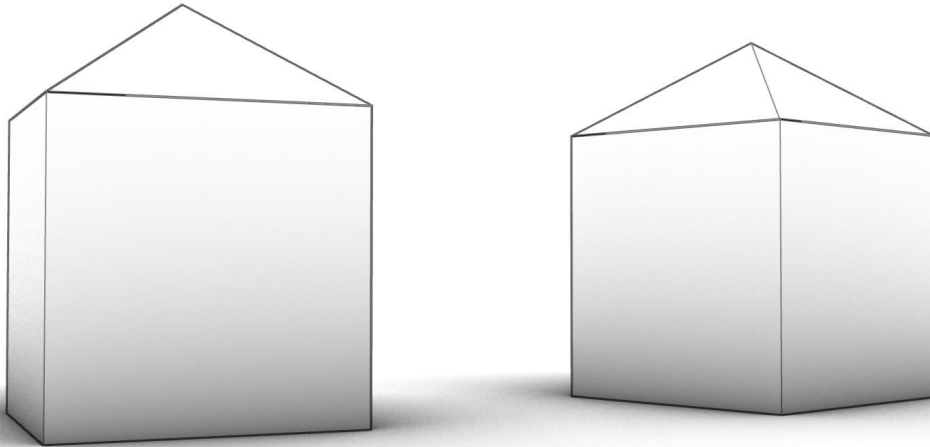
FIND VANISHING POINT

# PERSPECTIVE



VANISHING LINES MEET AT SINGLE VP

# PERSPECTIVE



FORESHORTENING

# PERSPECTIVE

- Is the observer standing or sitting?

